

## Featured products catalog



# K<sup>3</sup>



## SybronEndo. A better endo experience.

**SybronEndo**  
Sybron Dental Specialties

1717 West Collins Avenue, Orange, CA 92867  
Tel 800.346.3636 Tel 714.516.7979 Fax 714.516.7936

SybronEndo Europe, Basicweg 20, 3821 BR Amersfoort, The Netherlands  
Tel +31 33 453 61 59 Fax +31 33 453 61 53 endo@sybronendo.com

SybronEndo Australia, Unit 10/112-118 Talavera Road, North Ryde NSW 2113.  
Tel 1800 052 030 Fax 02 8875 8175 sybronendoaustralia@sybrondental.com

Visit us online at [sybronendo.com](http://sybronendo.com)

**SybronEndo**  
Sybron Dental Specialties



## Can your NiTi file do this?



**EXTRAORDINARY FLEXIBILITY** – TF® files from SybronEndo are up to 70% more flexible than other rotary NiTi files.\* The proven design of TF significantly reduces file breakage and allows you to work with greater efficiency and confidence.

**FASTER AND EASIER** – The TF sequence requires just 3 files for most cases. TF's variable pitch design and improved surface finish ensure fast, ideal canal shaping every time.

**CONFIDENCE IN ENDODONTICS** – TF provides unsurpassed safety and ease of use.

For more information on TF, see page 4.

\*Data on file, Sybron Dental Specialties, Inc.



TWISTED FILES

### DIAGNOSTICS

- 2 | Rider Digital Apex Locator
- 3 | Elements Diagnostic Unit  
Elements Apex Locator  
Mini Apex Locator  
Vitality Scanner 2006

### SHAPE

- 4 | Twisted Files
- 6 | K3 Nickel-Titanium Files
- 7 | Endo-Ring
- 8 | LA Axxess Burs  
TCM Endo III
- 9 | EndoTouch TC  
M4 Safety Handpiece  
Axxess Handpieces
- 10 | K-Flex Files  
K-Files  
Pathfinder
- 11 | Triple-Flex Files  
Hedstrom Files  
Pathfinder CS
- 12 | Sterile K-Flex Files  
Sterile Hedstrom Files  
Reamers  
Barbed Broaches

### CLEAN

- 13 | SmearClear  
SlickGel ES

### OBTURATION

- 14 | RealSeal 1  
RealSeal SE Self-Etch Sealer
- 15 | Soft-Core
- 16 | RealSeal
- 17 | K3 Gutta Percha

### OBTURATION

- 17 | TF Gutta Percha  
TF Paper Points  
Autofit Paper Points  
Tip Snip
- 18 | System B Cordless
- 19 | Elements Obturation Unit  
Needle Bending Tool  
.04 Plugger  
Hot Pulp Test Tip
- 20 | System B Heat Source  
Buchanan Heat Pluggers
- 21 | Buchanan Hand Pluggers  
Touch 'n Heat 5004
- 22 | Auxiliary Gutta Percha  
Standardized Gutta Percha  
Absorbent Points
- 23 | Xpress Sealers  
Sealapex  
Tubli-Seal  
Tubli-Seal EWT  
Pulp Canal Sealer  
Pulp Canal Sealer EWT

### ULTRASONICS

- 24 | MiniEndo II  
Ultrasonic Tip Introductory Kit
- 25 | The "4" Series Ultrasonic Tips  
Spreader Ultrasonic Tips  
BK-3 Ultrasonic Tips  
Specialty Ultrasonic Tips
- 26 | UT Ultrasonic Tips  
SJ Ultrasonic Tips  
Diamond-Coated Ultrasonic Tips
- 27 | CT Ultrasonic Tips  
RedStar Ultrasonic Tips  
File Adapter

**NEW!**

# Rider™

## Rider Digital Apex Locator

### Accurate Real-Time Feedback

Advanced digital technology enables the Rider to accurately and reliably pinpoint the working length in the range of .05 – 0.00mm in both wet and dry fields.

### Versatility and Convenience

Depending on your preference and access needs, the Rider can be configured in 3 different ways:

- 1) Attached directly to the motor on a handpiece\*
- 2) Attached to a file by the lead wire
- 3) Independent with a hand file



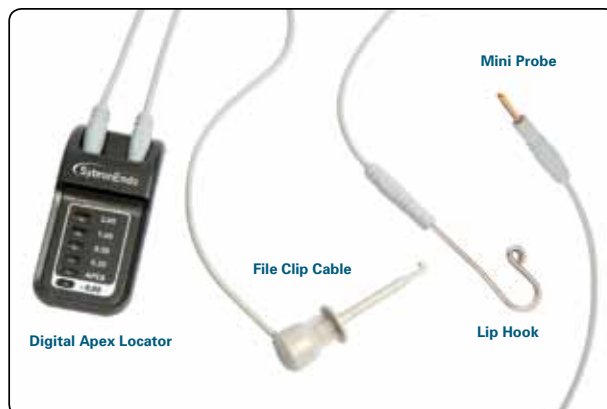
### Smallest Unit Available

Weighing just 26 grams, the Rider provides real time visual and audio feedback that can be muted with a simple tilting motion.

### Rider Digital Apex Locator Kit 972-0200

Contains: 1 Digital Apex Locator, 2 Apron Clasps, 1 Handpiece E-Type Adaptor, 1 Motor Strap 22-25, 1 Motor Strap 24-27, 1 Lead Wire Connector, 4 Lead Wires 75cm, 1 Extension Cable 50cm, 1 Disposable Sleeves pack, 1 Mini Probe, 2 Lip Hooks, 1 File Clip, 1 Battery, 1 Operating Manual.

|  |          |
|--|----------|
| Apron Clasp (pkg of 2)                   | 972-0201 |
| Handpiece E-Type Adaptor                 | 972-0202 |
| Motor Strap 22-25 (pkg of 2)             | 972-0203 |
| Motor Strap 24-27 (pkg of 2)             | 972-0204 |
| Lead Wire Connector (autoclavable)       | 972-0205 |
| Lead Wire 75cm (autoclavable) (pkg of 2) | 972-0206 |
| Extension Cable 50cm (pkg of 2)          | 972-0207 |
| Disposable Sleeves (pkg of 20)           | 972-0208 |
| Mini Probe (pkg of 2)                    | 973-0120 |
| Lip Hook (autoclavable) (pkg of 5)       | 973-0282 |
| File Clip (autoclavable) (pkg of 3)      | 973-0283 |
| X-Smart Adaptor                          | 973-0209 |
| Operating Manual                         |          |



\*The Rider works when attached to most handpiece motors. Attach to file by lead wire in the event you are not getting a reading. Compatible with most E-type Connections. See product insert for list of compatible handpieces.

## Elements™ Diagnostic Unit and Apex Locator

|  |          |
|--|----------|
| <b>A</b> Elements Diagnostic Unit                                  | 973-0300 |
| <b>A</b> Elements Diagnostic Unit (without Satellite)              | 973-0320 |
| <b>B</b> File Clip   | 973-0310 |
| <b>C</b> Bifurcated Probe  | 973-0307 |
| <b>D</b> Crown Test Tip (Diagnostic Unit only)                     | 973-0309 |
| <b>E</b> Vitality Probe (Diagnostic Unit only)                     | 973-0308 |
| <b>F</b> Lip Hook (pkg of 5)                                       | 973-0313 |
| <b>G</b> Elements Patient Lead Cord (for use with Satellite)       | 973-0311 |
| <b>H</b> Satellite with Satellite Cord                             | 973-0303 |
| <b>I</b> Elements Apex Locator                                     | 973-0301 |
| Apex Locator (without Satellite)                                   | 973-0321 |
| Elements Patient Lead Cord (without Satellite) <i>Not Pictured</i> | 973-0304 |
| Charge Adapter <i>Not Pictured</i>                                 | 973-0302 |
| Battery Pack <i>Not Pictured</i>                                   | 973-0305 |

The convenience and accuracy of a high quality pulp tester and apex locator in one system. What's more, the satellite display conveniently brings critical data into your field of vision.



## Mini Apex Locator

SybronEndo's Mini Apex Locator delivers the power of apex location in the palm of your hand and offers a new level of accuracy at an affordable price.



|                                     |                 |
|-------------------------------------|-----------------|
| <b>Mini Apex Locator</b>            | <b>973-0280</b> |
| Lead Wire (autoclavable) (pkg of 2) | 973-0281        |
| Lip Hook (autoclavable) (pkg of 5)  | 973-0282        |
| Mini Probe (55mm long) (pkg of 2)   | 973-0120        |
| File Clip (autoclavable) (pkg of 3) | 973-0283        |
| Long Probe (120mm long) (pkg of 2)  | 973-0121        |
| Disposable Sleeves (pkg of 16)      | 973-0284        |

## Vitality Scanner 2006

The Vitality™ Scanner 2006 ensures dependable and pain-free pulp testing. This outstanding diagnostic tool is automatically controlled and features large digital readouts. It's the quick and easy solution for patient- and practice-friendly pulp testing.



|                              |                 |
|------------------------------|-----------------|
| <b>Vitality Scanner 2006</b> | <b>973-0234</b> |
| Short Probe Tip              | 973-0232        |
| Long Probe Tip               | 973-0233        |
| Mini-Tip Kit                 | 973-0231        |
| Lip Clip (pkg of 5)          | 973-0227        |
| Grounding Lead with Lip Clip | 973-0226        |



TWISTED FILES

### TF – Twisted Files

TF® is produced with SybronEndo's proprietary R-Phase™ Technology, resulting in NiTi files that are 70% more flexible and 2-3 times more resistant to cyclic fatigue than other rotary files.\* This special technology also enables TF to maintain the natural anatomy of the canal better than other files. TF preserves dentin and adds to the longevity of the post-RCT tooth.

#### Simple 3 File Technique

Most brands of NiTi files require 5, 6 or even more files per case. Not TF from SybronEndo. The TF Technique is just 3 files per case, perfectly matched to the type of tooth you're treating – 1 set for anteriors, another for premolars and molars. By reducing the number of files to just 3, we've taken much of the complexity out of root canal therapy. TF makes file selection simple, straightforward and easy.

#### Fast and Efficient

A simpler technique means more than just ease of use. Since doctors typically use 3 TF files per case, fewer files per treatment translates into less inventory, lower file cost per procedure, more time savings, and ultimately more predictable RCT.

\*Data on file, Sybron Dental Specialties, Inc. Data from Gambarini G. Cyclic fatigue test and flexibility test.



Black Carrier Box — Individual File Size (Available in .04, .06, .08, .10 & .12 tapers)



Blue Carrier Box — Large Assorted Files (Contains .06, .08, & .10 tapers)



White Carrier Box — Small Assorted Files (Contains .04, .06 & .08 tapers)

| TF Taper | Tip | 23mm     | 27mm     |
|----------|-----|----------|----------|
| .12      | 25  | 822-2253 |          |
| .10      | 25  | 822-0253 | 822-0257 |
| .08      | 25  | 822-8253 | 822-8257 |
| .06      | 35  | 822-6353 | 822-6357 |
| .06      | 30  | 822-6303 | 822-6307 |
| .06      | 25  | 822-6253 | 822-6257 |
| .04      | 50  | 822-4503 | 822-4507 |
| .04      | 40  | 822-4403 | 822-4407 |
| .04      | 25  | 822-4253 | 822-4257 |

| TF SMALL ASSORTED |        |
|-------------------|--------|
| 822-4683<br>23mm  |        |
| Taper .08         | Tip 25 |
| Taper .06         | Tip 25 |
| Taper .04         | Tip 25 |

| TF LARGE ASSORTED |        |
|-------------------|--------|
| 822-6803<br>23mm  |        |
| Taper .10         | Tip 25 |
| Taper .08         | Tip 25 |
| Taper .06         | Tip 25 |

| TF SMALL APICAL ASSORTED |        |
|--------------------------|--------|
| 822-8663<br>23mm         |        |
| Taper .08                | Tip 25 |
| Taper .06                | Tip 30 |
| Taper .06                | Tip 35 |

| TF SMALL ASSORTED |        |
|-------------------|--------|
| 822-4687<br>27mm  |        |
| Taper .08         | Tip 25 |
| Taper .06         | Tip 25 |
| Taper .04         | Tip 25 |

| TF LARGE ASSORTED |        |
|-------------------|--------|
| 822-6807<br>27mm  |        |
| Taper .10         | Tip 25 |
| Taper .08         | Tip 25 |
| Taper .06         | Tip 25 |

| TF LARGE APICAL ASSORTED |        |
|--------------------------|--------|
| 822-6643<br>23mm         |        |
| Taper .06                | Tip 30 |
| Taper .06                | Tip 35 |
| Taper .04                | Tip 40 |

## EASY AS 1, 2 & 3

SIMPLE TECHNIQUE • FEWER FILES • GREAT RESULTS

### STEP 1

### STEP 2

### STEP 3

ANTERIORS

.08 25  
ITEM CODE 822-8257



.06 30  
ITEM CODE 822-6307



.04 40  
ITEM CODE 822-4407

POSTERIORS

.08 25  
ITEM CODE 822-8253



.06 25  
ITEM CODE 822-6253



.06 30  
ITEM CODE 822-6303



TF apical sizes are packaged in blue labels for easy identification.



## K<sup>3</sup>

### K3 Nickel-Titanium Files\*

K3™ is a third-generation, triple-fluted, asymmetric endodontic file system. Designed to cut quickly, efficiently and safely, with unparalleled debris removal, the K3 addresses technical and procedural issues that no other ground-fluted instrument does.

#### Variable Pitch

Many files maintain a constant pitch (distance between cutting edges) through the length of the file. This may cause a “screw-in” effect whereby each successive flute naturally follows the path created by the one before. The K3 file has a varied pitch that allows debris to effectively channel coronally. This is important not only during initial cleaning and shaping but also for retreatment.

#### Less Friction, More Support

With the recessed trailing edge of the radial land, K3 files minimize frictional resistance. Other nickel-titanium systems have wide radial lands that cause friction and can lead to breakage. K3 files have added mass behind the cutting surface to provide support and maintain integrity. With other systems, blade rollover or cracks can occur during instrumentation.

\*Not available in all areas. Check with SybronEndo for availability.



#### K3 Nickel-Titanium Files (pkg of 6)

| Taper               | Tip        | 17mm     | 21mm     | 21mm     |
|---------------------|------------|----------|----------|----------|
| .12                 | 25         | 830-2257 | 830-2251 | 830-2255 |
| .10                 | 25         | 830-0257 | 830-0251 | 830-0255 |
| .08                 | 25         | 830-8257 | 830-8251 | 830-8255 |
| Taper               | Tip        | 21mm     | 25mm     | 30mm     |
| .06                 | 60         | 825-6601 | 825-6605 | 825-6600 |
| .06                 | 55         | 825-6551 | 825-6555 | 825-6550 |
| .06                 | 50         | 825-6501 | 825-6505 | 825-6500 |
| .06                 | 45         | 825-6451 | 825-6455 | 825-6450 |
| .06                 | 15-40 Asst | 825-6021 | 825-6025 |          |
| .06                 | 40         | 825-6401 | 825-6405 | 825-6400 |
| .06                 | 35         | 825-6351 | 825-6355 | 825-6350 |
| .06                 | 30         | 825-6301 | 825-6305 | 825-6300 |
| .06                 | 25         | 825-6251 | 825-6255 | 825-6250 |
| .06                 | 20         | 825-6201 | 825-6205 | 825-6200 |
| .06                 | 15         | 825-6151 | 825-6155 | 825-6150 |
| .04                 | 60         | 825-4601 | 825-4605 | 825-4600 |
| .04                 | 55         | 825-4551 | 825-4555 | 825-4550 |
| .04                 | 50         | 825-4501 | 825-4505 | 825-4500 |
| .04                 | 45         | 825-4451 | 825-4455 | 825-4450 |
| .04                 | 15-40 Asst | 825-4021 | 825-4025 |          |
| .04                 | 40         | 825-4401 | 825-4405 | 825-4400 |
| .04                 | 35         | 825-4351 | 825-4355 | 825-4350 |
| .04                 | 30         | 825-4301 | 825-4305 | 825-4300 |
| .04                 | 25         | 825-4251 | 825-4255 | 825-4250 |
| .04                 | 20         | 825-4201 | 825-4205 | 825-4200 |
| .04                 | 15         | 825-4151 | 825-4155 | 825-4150 |
| .02                 | 15-40 Asst | 825-2021 | 825-2025 |          |
| .02                 | 45         | 825-2451 | 825-2455 | 825-2450 |
| .02                 | 40         | 825-2401 | 825-2405 | 825-2400 |
| .02                 | 35         | 825-2351 | 825-2355 | 825-2350 |
| .02                 | 30         | 825-2301 | 825-2305 | 825-2300 |
| .02                 | 25         | 825-2251 | 825-2255 | 825-2250 |
| .02                 | 20         | 825-2201 | 825-2205 | 825-2200 |
| .02                 | 15         | 825-2151 | 825-2155 | 825-2150 |
| <b>K3 Intro Kit</b> |            | 825-0046 |          |          |

#### K3 Procedure Packs

| 830-0621<br>17mm |     | 830-0625<br>17mm |     | 830-0421<br>17mm |     | 830-0425<br>17mm |     |
|------------------|-----|------------------|-----|------------------|-----|------------------|-----|
| Taper            | Tip | Taper            | Tip | Taper            | Tip | Taper            | Tip |
| .10              | 25  | .10              | 25  | .10              | 25  | .10              | 25  |
| .08              | 25  | .08              | 25  | .08              | 25  | .08              | 25  |
| 21mm             |     | 25mm             |     | 21mm             |     | 25mm             |     |
| Taper            | Tip | Taper            | Tip | Taper            | Tip | Taper            | Tip |
| .06              | 40  | .06              | 40  | .04              | 40  | .04              | 40  |
| .06              | 35  | .06              | 35  | .04              | 35  | .04              | 35  |
| .06              | 30  | .06              | 30  | .04              | 30  | .04              | 30  |
| .06              | 25  | .06              | 25  | .04              | 25  | .04              | 25  |

#### K3 VTVT Packs

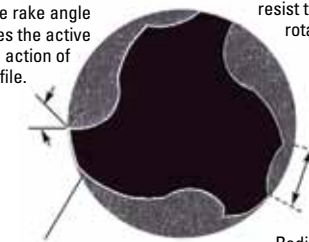
| 830-7721<br>21mm |     | 830-7725<br>25mm |     |
|------------------|-----|------------------|-----|
| Taper            | Tip | Taper            | Tip |
| .10              | 25  | .10              | 25  |
| .08              | 25  | .08              | 25  |
| .06              | 35  | .06              | 35  |
| .04              | 30  | .04              | 30  |
| .06              | 25  | .06              | 25  |
| .04              | 20  | .04              | 20  |

#### K3 G-Packs

| 830-9921<br>17mm |     | 830-9925<br>17mm |     |
|------------------|-----|------------------|-----|
| Taper            | Tip | Taper            | Tip |
| .12              | 25  | .12              | 25  |
| 21mm             |     | 25mm             |     |
| Taper            | Tip | Taper            | Tip |
| .10              | 25  | .10              | 25  |
| .08              | 25  | .08              | 25  |
| .06              | 25  | .06              | 25  |
| .04              | 25  | .04              | 25  |
| .02              | 25  | .02              | 25  |

#### Engineered for Efficiency

Positive rake angle provides the active cutting action of the K3 file.



Reduced radial land with wide blade support adds peripheral strength to resist torsional and rotary stresses.

The third radial land stabilizes and keeps the instrument centered in the canal and minimizes “over-engagement.”

Radial land relief reduces friction on the canal wall.

### EndoRing

A convenient way to hold endodontic instruments and canal lubricant during a procedure, the EndoRing features an easy-to-read ruler with rubber stop port, allowing quick measurements of files up to 30mm (at .5mm and 1mm increments) for both right- and left-handed clinicians. The EndoRing and the foam inserts are autoclavable.

#### EndoRing Kit

825-0049

Contains:

- 1 – EndoRing Measuring Device (with 3 sizes of rings)
- 1 – Nondisposable Gel Well
- 4 – Disposable Gel Wells
- 3 – Foam Inserts

Foam Inserts (48 pieces – 24 blue/24 yellow)

825-0050

Disposable Gel Wells (24 pieces)

825-0051



## LA Axxess Burs

Designed by Dr. L. Stephen Buchanan, the LA Axxess™ line angle instruments optimize your access preparations. Our new LA Axxess Diamond Bur, designed for use with high-speed handpieces, makes the job even easier. Non-cutting parabolic tips ensure perfectly cut line angle extensions without ledges or irregularities. These burs quickly, safely and accurately cut ideal filepaths through coronal tooth structure, reducing access time and minimizing the chances of file separation. In straight canals, our line angle instruments can be used to shape the coronal part of the canal in seconds. All the burs you need for initial access opening through restorations or crowns in one handy kit.



**LA Axxess Kit 815-1400**  
(Kit contains 2 of each bur)



**LA Axxess 2.0 Kit 815-1404**  
(Kit contains 2 of select burs)



### LA Axxess Diamond Refills

(Shown from left to right)

|                                       |          |
|---------------------------------------|----------|
| #2 Round Diamond (pkg of 5)           | 815-1418 |
| Long Tapered Diamond (pkg of 5)       | 815-1420 |
| Extra Long Tapered Diamond (pkg of 5) | 815-1421 |
| Football Diamond (pkg of 5)           | 815-1419 |
| LA Axxess Diamond Bur (pkg of 6)      | 815-1415 |

## TCM Endo III

The microprocessor-controlled Nouvag TCM Endo III is a slow-speed, electric torque-control motor capable of achieving fast and easy root canal preparation. Speed and maximum torque levels are preselectable and constantly controlled by the TCM Endo III control unit. The TCM Endo III is compatible with the TF and K3 instruments as well as most NiTi rotary systems. Handpiece sold separately.

|                                  |          |
|----------------------------------|----------|
| TCM Endo III, 110v               | 815-9113 |
| TCM Endo III, 220v               | 815-9114 |
| TCM Endo III, 220v Great Britain | 815-9115 |
| TCM Endo III Electric Motor Only | 815-9116 |
| TCM Endo III Foot Pedal          | 815-9117 |
| Shaping Block (pkg of 5)         | 815-9021 |



## EndoTouch TC

The EndoTouch™ TC is our first endodontic motor without a cord or foot pedal. Small, light, and powerful, the EndoTouch TC delivers 5 torque settings and 9 preset speeds, giving the clinician total control during instrumentation. Combined with TF or K3 rotary nickel-titanium files, it is the most advanced system available.

### Features

- No cord or foot pedal
- Small, lightweight and comfortable
- Five torque settings
- Nine speed options available
- Auto-reverse
- Quick-charge battery

|                          |                 |
|--------------------------|-----------------|
| <b>Endotouch TC 110v</b> | <b>815-9122</b> |
| <b>Endotouch TC 220v</b> | <b>815-9123</b> |

## M4 Safety Handpiece

The watch-winding, oscillating movement of the M4 Safety® Handpiece keeps the instrument “floating” in the canal. The operator controls coronal and apical pressure, while the M4 smoothly and efficiently “glides” the endo instrument through the canal. That’s the “safety” in the M4 Handpiece.



## Axxess Handpieces

SybronEndo handpieces are compatible with all manufacturers' e-type couplings and are ideal for TF, K3, Quantec and other rotary files. The Axxess handpiece provides 5mm of additional clearance (when used with Axxess files such as K3) to ease work in tight posterior regions and will also accept standard rotary files. The 18:1 handpiece is perfect for rotary NiTi use and is available with a variety of heads.

|   |          |
|---|----------|
| 18:1 Axxess Spring-Head Handpiece       | 815-9016 |
| 18:1 Axxess Latch-Head Handpiece*       | 815-9010 |
| 18:1 Axxess Push-Button-Head Handpiece* | 815-9008 |
| 18:1 Replacement Axxess Spring Head*    | 815-9081 |



\*Not available in Europe.



## K-Flex Files

K-Flex® Files feature a unique rhomboid design, which provides a short axis for flexibility while maintaining cross-sectional strength. K-Flex is more flexible than conventional “K” files of comparable size, particularly in sizes #30 and above, which facilitates the negotiation of curved canals and their preparation with minimal potential for ledging and perforating.



### K-Flex Files (pkg of 6)

| Size       | 21mm     | 25mm     | 30mm     |
|------------|----------|----------|----------|
| 80         |          | 15174    | 15258    |
| 70         |          | 15170    | 15254    |
| 60         | 15334    | 15166    | 15250    |
| 55         | 15330    | 15162    | 15246    |
| 50         | 15326    | 15158    | 15242    |
| 45         | 15322    | 15154    | 15238    |
| 40         | 15318    | 15150    | 15234    |
| 35         | 15314    | 15146    | 15230    |
| 30         | 15310    | 15142    | 15226    |
| 25         | 15306    | 15138    | 15222    |
| 20         | 15302    | 15134    | 15218    |
| 15         | 15298    | 15130    | 15214    |
| 10         | 15294    | 15126    | 15210    |
| 08         | 15290    | 15122    | 15206    |
| 06         | 60120    | 60144    | 60193    |
| 15-40 Asst | 821-4021 | 821-4025 | 821-4030 |
| 45-80 Asst |          | 821-4125 | 821-4130 |



## K-Files

The K-File is the strongest of the hand-files, less separation potential. K-Files can bypass obstructions with far greater ease.



### K-Files (pkg of 6)

| Size       | 21mm     | 25mm     | 30mm     |
|------------|----------|----------|----------|
| 80         | 06026    | 06099    | 06170    |
| 70         | 06024    | 06085    | 06166    |
| 60         | 06023    | 06077    | 06163    |
| 55         | 06022    | 06076    | 06162    |
| 50         | 06021    | 06075    | 06161    |
| 45         | 06020    | 06074    | 06160    |
| 40         | 06019    | 06069    | 06159    |
| 35         | 06016    | 06067    | 06157    |
| 30         | 06015    | 06066    | 06156    |
| 25         | 06014    | 06065    | 06155    |
| 20         | 06005    | 06064    | 06153    |
| 15         | 06004    | 06063    | 06152    |
| 10         | 06003    | 06062    | 06151    |
| 08         | 14127    | 14128    | 14129    |
| 06         | 62249    | 62250    | 62251    |
| 15-40 Asst | 821-8021 | 821-8025 | 821-8030 |
| 45-80 Asst | 821-8121 | 821-8125 | 821-8130 |

## Pathfinder

Stainless steel Pathfinder™ instruments feature a minimal taper and are used for negotiating difficult or calcified canals.

### Pathfinder (pkg of 6)

| 21mm  | 25mm  |
|-------|-------|
| 17023 | 17017 |



## Triple-Flex Files

Triple-Flex® Files are triangular-bladed, stainless steel instruments designed for flexibility with integrity. The twisted flutes allow aggressive cutting and debris removal you demand without sacrificing the instrument's inherent stability. Unlike round blades that have flutes ground in, Triple-Flex Files are highly breakage-resistant, even in the most stressful situations.



### Triple-Flex Files (pkg of 6)

| Size       | 21mm     | 25mm     | 30mm     |
|------------|----------|----------|----------|
| 80         | 25941    | 25957    | 25973    |
| 70         | 25940    | 25956    | 25972    |
| 60         | 25939    | 25955    | 25971    |
| 55         | 25938    | 25954    | 25970    |
| 50         | 25937    | 25953    | 25969    |
| 45         | 25936    | 25952    | 25968    |
| 40         | 25935    | 25951    | 25967    |
| 35         | 25933    | 25949    | 25965    |
| 30         | 25932    | 25948    | 25964    |
| 25         | 25931    | 25947    | 25963    |
| 20         | 25930    | 25946    | 25962    |
| 15         | 25929    | 25945    | 25961    |
| 10         | 25928    | 25944    | 25960    |
| 08         | 25927    | 25943    | 25959    |
| 15-40 Asst | 821-3021 | 821-3025 | 821-3030 |
| 45-80 Asst | 821-3121 | 821-3125 | 821-3130 |



## Hedstrom Files

Hedstrom Files are ground from stainless steel wire. The flute depth increases with the taper, creating a sharper, more flexible instrument.

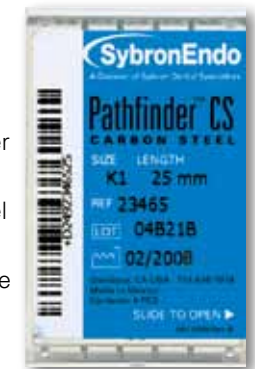


### Hedstrom Files (pkg of 6)

| Size       | 21mm  | 25mm  | 30mm  |
|------------|-------|-------|-------|
| 70         | 12796 | 11354 | 13278 |
| 60         | 12793 | 11353 | 12841 |
| 55         | 12790 | 11352 | 12838 |
| 50         | 12787 | 11351 | 12835 |
| 45         | 12784 | 11350 | 12832 |
| 40         | 12781 | 11349 | 12829 |
| 35         | 12778 | 11348 | 12826 |
| 30         | 12775 | 11347 | 12823 |
| 25         | 12772 | 11346 | 12820 |
| 20         | 12769 | 11345 | 12817 |
| 15         | 12766 | 11344 | 12814 |
| 15-40 Asst | 12809 | 11359 | 13291 |
| 45-80 Asst | 12810 | 11360 | 13292 |

## Pathfinder CS

Pathfinder® CS instruments feature the same minimal taper as stainless steel Pathfinders but are made with carbon steel to help negotiate difficult or calcified canals faster and more efficiently.



### Pathfinder CS (pkg of 6)

| Size | Handle     | 19mm  | 21mm  | 25mm  |
|------|------------|-------|-------|-------|
| K1   | Dark Brown | 22935 | 22936 | 23465 |
| K2   | Orange     | 22937 | 22938 | 23467 |



### Sterile K-Flex and Hedstrom Files

SybronEndo now offers some of our most popular stainless steel hand files, K-Flex and Hedstrom, in new sterile packs. Our sterile handfiles will help doctors reduce preparation time, lower sterilization costs and ensure patient safety from contaminated files. Safe for your patients, convenient for you and perfect for all endodontic practitioners.

#### Sterile K-Flex Files (pkg of 60)

| Size       | 21mm  | 25mm  |
|------------|-------|-------|
| 40         | 62112 | 62201 |
| 35         | 62110 | 62200 |
| 30         | 62109 | 62198 |
| 25         | 62108 | 62197 |
| 20         | 62106 | 62190 |
| 15         | 62105 | 62182 |
| 10         | 62104 | 62174 |
| 08         | 62102 | 62173 |
| 06         | 62101 | 62170 |
| 15-40 Asst | 62118 | 62217 |

#### Sterile Hedstrom Files (pkg of 60)

| Size       | 21mm  | 25mm  |
|------------|-------|-------|
| 50         |       | 62615 |
| 45         |       | 62614 |
| 40         | 62457 | 62613 |
| 35         | 62456 | 62612 |
| 30         | 62455 | 62593 |
| 25         | 62454 | 62592 |
| 20         | 62453 | 62591 |
| 15         | 62452 | 62588 |
| 15-40 Asst | 62449 | 62623 |

### Barbed Broaches

Barbed Broaches are 21mm in length and come presterilized.



#### Barbed Broaches (pkg of 30)

| Size |                                 |       |
|------|---------------------------------|-------|
| ○    | XXXF                            | 17008 |
| ●    | XXF                             | 17009 |
| ●    | XF                              | 17010 |
| ●    | F                               | 17011 |
| ●    | M                               | 17012 |
| ●    | C                               | 17013 |
|      | Assorted (10 ea: XXXF, XXF, XF) | 17014 |
|      | Assorted (10 ea: F, M, C)       | 17015 |

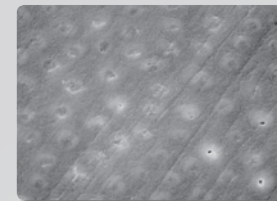
### Reamers

Reamers are made from stainless steel wire that is ground to a triangular shape and twisted.

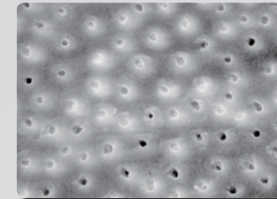


#### Reamers (pkg of 6)

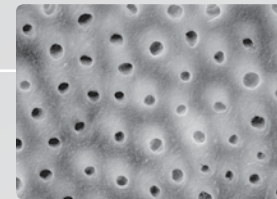
| Size       | 21mm     | 25mm     | 30mm  |
|------------|----------|----------|-------|
| 45         | 06040    | 06132    |       |
| 40         | 06038    | 06131    |       |
| 35         | 06034    | 06127    |       |
| 30         | 06033    | 06126    |       |
| 25         | 06032    | 06120    |       |
| 20         | 06031    | 06112    |       |
| 15         | 06030    | 06111    |       |
| 10         | 06029    | 06110    |       |
| 08         | 14133    | 14134    |       |
| 06         | 62252    | 62253    | 62254 |
| 15-40 Asst | 821-2021 | 821-2025 |       |



5.25% NaOCl



17% EDTA



SmearClear

Photos (200x) show decal tubules after instrumentation, a NaOCl soak and further 1-minute soak in the respective irrigant. Photos and study courtesy of Drs. J. Jantararat, K. Yanpiset and C. Harnirattaisai.

### SmearClear

Successful endodontic therapy demands a clean and clear root canal system. SmearClear's enhanced EDTA formulation addresses this issue by consistently removing the smear layer and leaving the dentinal tubules clear of organic matter. The practitioner will recognize an increase in the efficacy of adhesives as well as an assist in the 3-dimensional obturation of the root canal system.

#### SmearClear® Kit

SmearClear Liquid Refill  
 Syringe (3) and Side-Vented Needle (30) Refill

#### 973-1001

973-1002  
 973-1003

### SlickGel ES

SlickGel™ ES is specially formulated water-based suspension to aid in the negotiation of root canals by endodontic instruments. Each MicroDose® polytube contains EDTA that chelates calcifications in the root canal system. Sodium hypochlorite irrigants react with SlickGel ES's urea peroxide to produce vigorous bubbling action that helps flush debris from the root canal system.

#### SlickGel ES pack

12 MicroDose polytubes (1ml ea)

#### 973-1015



SlickGel™ ES



## RealSeal 1



RealSeal 1 Bonded Obturator™ is the next generation in carrier-based delivery systems. All the components of RealSeal 1 – sealer, filler and core – are resin-based materials and bond with each other to form a superior seal. Creating a true chemical bond when these materials contact, this proven technology provides superior leakage prevention.<sup>1</sup> As an added benefit, this system's core is engineered to be easily discernable on a radiograph from the Resilon filling material that coats it.

An obturation system has one primary function – sealing the canal. RealSeal 1 creates a superior seal, preventing leakage and re-infection. In an independent blind study conducted at the University of Rome, the RealSeal 1 Obturation System resisted leakage 6 times better than GP obturation systems tested and nearly 10 times better than the Thermafil® system.\*

1. "A Fluid Filtration Comparison of Gutta-Percha Versus Resilon: A New Soft Resin Obturation System." Stratton et al., U.S. Army Dental Activity, Fort Bragg, NC. Abstract: #OR20, JOE, Vol. 31(3), March 2005.

\*Data on file.



Oven



Intro Kit



### RealSeal SE Self-Etch Sealer

Sealer syringe (pkg of 1) 972-2012  
 Mixing Tips (pkg of 12) 972-2011

### RealSeal 1 — Intro Kit 972-2000

RealSeal SE Self-Etch Sealer (4ml syringe)  
 Small Plastic Practice Block  
 Large Plastic Practice Block  
 1 pack each of #25, #30, #35 Verifiers  
 1 pack each of #25, #30, #35 Obturators  
 Instructions, DVD, Technique Guide

### RealSeal 1 — Oven 972-2019

Oven, Instructions

### RealSeal 1 — Obturators (pkg of 6)

#20 972-2020  
 #25 972-2025  
 #30 972-2030  
 #35 972-2035  
 #40 972-2040  
 #45 972-2045  
 #50 972-2050  
 #55 972-2055  
 #60 972-2060  
 #70 972-2070  
 #80 972-2080  
 #90 972-2090

### RealSeal 1 — Verifiers (pkg of 6)

#20 972-2120  
 #25 972-2125  
 #30 972-2130  
 #35 972-2135  
 #40 972-2140  
 #45 972-2145  
 #50 972-2150  
 #55 972-2155  
 #60 972-2160  
 #70 972-2170  
 #80 972-2180  
 #90 972-2190

## Soft-Core

Soft-Core's carrier is 30% thinner than Thermafil®, allowing greater flexibility to navigate curved canals. A thinner core means more gutta percha for denser fills every time. And with just one universal taper size, you can greatly reduce and simplify your carrier inventory. Soft-Core® is made with the most advanced Alpha Phase gutta percha available, ensuring excellent flow ability, adhesive qualities and superior sealing capabilities. In a recent university study, Soft-Core had 40% less microleakage than Thermafil.\*

### Soft-Core Intro Kit 972-3000

Contains: 1 Soft-Core Oven, 3 packs each of #20, #25, #30, #35 Obturators (pkg of 6), 2 packs each of #20, #25, #30, #35 Size Verifiers (pkg of 6), 1 pack of #1 LA Axxess Stainless Steel Burs (pkg of 6).

### Soft-Core Oven 972-3002

The all new Soft-Core Oven provides a simple and consistent way to completely heat up to 4 Soft-Core Obturators at once.

### #1 LA Axxess Stainless Steel Bur (pkg of 6) 815-1401

### Soft-Core Size Verifiers (pkg of 6)

|     |          |     |          |
|-----|----------|-----|----------|
| #20 | 972-3220 | #45 | 972-3245 |
| #25 | 972-3225 | #50 | 972-3250 |
| #30 | 972-3230 | #55 | 972-3255 |
| #35 | 972-3235 | #60 | 972-3260 |
| #40 | 972-3240 |     |          |

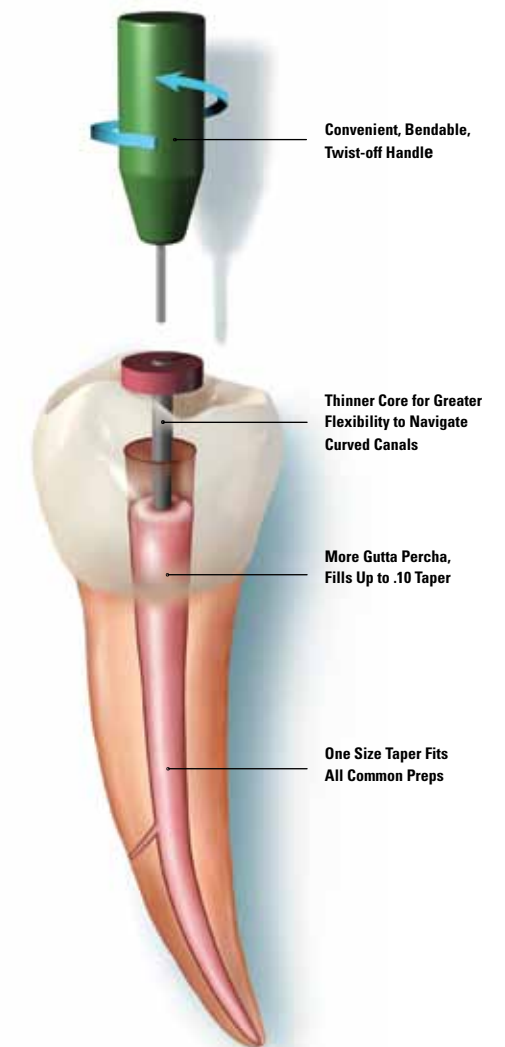
### Soft-Core Obturators (pkg of 6)

|     |          |     |          |
|-----|----------|-----|----------|
| #20 | 972-3020 | #45 | 972-3045 |
| #25 | 972-3025 | #50 | 972-3050 |
| #30 | 972-3030 | #55 | 972-3055 |
| #35 | 972-3035 | #60 | 972-3060 |
| #40 | 972-3040 |     |          |

### Soft-Core Obturator Economy Pack (pkg of 36)

|     |          |     |          |
|-----|----------|-----|----------|
| #20 | 972-3120 | #45 | 972-3145 |
| #25 | 972-3125 | #50 | 972-3150 |
| #30 | 972-3130 | #55 | 972-3155 |
| #35 | 972-3135 | #60 | 972-3160 |
| #40 | 972-3140 |     |          |

\*Data on file.



### Soft-Core Intro Kit



Soft-Core Oven

Obturators & Verifiers

#1 LA Axxess Stainless Steel Bur

## RealSeal

RealSeal™ is an endodontic filling material with the familiar handling characteristics of gutta percha and the added vital benefits of a superior seal. Because RealSeal is applied in the same way as gutta percha, adapting it to your current system is as seamless as the seal it creates. Use the obturation technique of your choice, adding only a priming step before filling.

### Features and Benefits

- **Leak-Resistant.** Unlike gutta percha, RealSeal leaves no gap for leakage. Coronal and apical leakage is substantially reduced.
- **Technique-Compatible.** Works with your current filling method.
- **Retreatable.** With solvent and/or heat. Like Grossman's formula, retreatments are easy.
- **Radiopaque.** Just like your current method of obturation, detection is not a problem.

### RealSeal Refills

|                                  |          |
|----------------------------------|----------|
| Pellets (pkg of 100)             | 972-2004 |
| Root Canal Sealant (w/12 mixers) | 972-2010 |
| 3 ml Thinning Resin              | 972-2006 |
| 6 ml Primer                      | 972-2007 |
| Mixing Wells (pkg of 25)         | 972-2008 |

### Accessory Points (pkg of 100)

|   |          |
|---|----------|
| XF (X-Fine)                             | 972-2301 |
| FF (Fine-Fine)                          | 972-2302 |
| MF (Medium-Fine)                        | 972-2303 |
| F (Fine)                                | 972-2304 |
| FM (Fine-Medium)                        | 972-2305 |
| M (Medium)                              | 972-2306 |
| L (Large)                               | 972-2307 |
| Assorted (XF-FF-MF-F-FM-M) (pkg of 120) | 972-2310 |

### Autofit Points (pkg of 50)

|                                       |          |
|---------------------------------------|----------|
| .04 Taper                             | 972-2311 |
| .06 Taper                             | 972-2312 |
| .08 Taper                             | 972-2313 |
| .10 Taper                             | 972-2314 |
| .12L Taper (1.35mm max dia)           | 972-2315 |
| .12S Taper                            | 972-2316 |
| Assorted Pack Taper (.06 – .12 Taper) | 972-2320 |

## RealSeal Kits

Kits contain: Root Canal Sealant (with 12 mixing tips), 3 ml Thinning Resin, 6 ml Primer, Mixing Wells (25) and Applicator Brushes (25)

### RealSeal Intro Kit 972-2100

- .04 Taper #15 – #40 (20/per size)
- .06 Taper #15 – #40 (20/per size)

### RealSeal .02 Taper Kit 972-2102

- .02 Taper #15 – #40 (20/per size)
- Accessory Points (20/per size)



### RealSeal SE Self-Etch Sealer

|                           |          |
|---------------------------|----------|
| Sealer syringe (pkg of 1) | 972-2012 |
| Mixing Tips (pkg of 12)   | 972-2011 |



### .02 Taper Points (pkg of 100)

|          |          |          |          |
|----------|----------|----------|----------|
| Size #20 | 972-2220 | Size #50 | 972-2250 |
| Size #25 | 972-2225 | Size #55 | 972-2255 |
| Size #30 | 972-2230 | Size #60 | 972-2260 |
| Size #35 | 972-2235 | Size #70 | 972-2270 |
| Size #40 | 972-2240 | Size #80 | 972-2280 |
| Size #45 | 972-2245 |          |          |

|  |          |
|--|----------|
| Assorted Sizes #15 – #40 (pkg of 120)  | 972-2201 |
| Assorted Sizes #45 – #80 (pkg of 120)  | 972-2202 |
| Assorted Sizes #90 – #140 (pkg of 120) | 972-2203 |

### .04 Taper Points (pkg of 50)

|                                       |          |          |          |
|---------------------------------------|----------|----------|----------|
| Size #20                              | 972-2420 | Size #35 | 972-2435 |
| Size #25                              | 972-2425 | Size #40 | 972-2440 |
| Size #30                              | 972-2430 | Size #45 | 972-2445 |
| Assorted Sizes #15 – #40 (pkg of 120) | 972-2401 |          |          |

### .06 Taper Points (pkg of 50)

|                                       |          |          |          |
|---------------------------------------|----------|----------|----------|
| Size #20                              | 972-2620 | Size #35 | 972-2635 |
| Size #25                              | 972-2625 | Size #40 | 972-2640 |
| Size #30                              | 972-2630 | Size #45 | 972-2645 |
| Assorted Sizes #15 – #40 (pkg of 120) | 972-2601 |          |          |

### Autofit Backfill Points (pkg of 60)

|                   |          |
|-------------------|----------|
| F (Fine)          | 972-2321 |
| FM (Fine-Medium)  | 972-2322 |
| M (Medium)        | 972-2323 |
| ML (Medium-Large) | 972-2324 |

## K3 Gutta Percha

### K3 Gutta Percha (pkg of 50)

| Taper | Tip         |          | Tip |             |          |
|-------|-------------|----------|-----|-------------|----------|
| .06   | 45          | 825-0645 | .04 | 45          | 825-0445 |
| .06   | 40          | 825-0640 | .04 | 40          | 825-0440 |
| .06   | 35          | 825-0635 | .04 | 35          | 825-0435 |
| .06   | 30          | 825-0630 | .04 | 30          | 825-0430 |
| .06   | 25          | 825-0625 | .04 | 25          | 825-0425 |
| .06   | 20          | 825-0620 | .04 | 20          | 825-0420 |
| .06   | 20-40 Asst  | 825-0600 | .04 | 20-40 Asst  | 825-0400 |
| .06   | Feather Tip | 825-0048 | .04 | Feather Tip | 825-0047 |



## Autofit Paper Points

Developed by Dr. L. Stephen Buchanan, Autofit Paper Points™ are an integral part of the Autofit system. Various sized tapers are color-coded for easy identification and will fit perfectly into Greater Taper preparations.

### Greater Taper Paper Points (pkg of 100)

| Taper    |          |
|----------|----------|
| .12      | 972-0115 |
| .10      | 972-0114 |
| .08      | 972-0113 |
| .06      | 972-0112 |
| .04      | 972-0111 |
| Assorted | 972-0110 |



## Tip Snip

Using a measurement dial, the Tip Snip™ flush cuts gutta percha to the apex size you need.

Tip Snip 815-9042



TF Gutta Percha and Paper Points (presterilized) have been made specifically for use with the TF Rotary NiTi Files.

### TF Gutta Percha (pkg of 100)

| Taper        | Tip |          |
|--------------|-----|----------|
| .12          | 25  | 822-1225 |
| .10          | 25  | 822-1025 |
| .08          | 25  | 822-0825 |
| .06          | 25  | 822-0625 |
| .04          | 25  | 822-0425 |
| .04-.12 Asst | 25  | 822-0010 |

### TF Paper Points (pkg of 100)

| Taper        |          |
|--------------|----------|
| .12          | 822-0002 |
| .10          | 822-0001 |
| .08          | 822-0008 |
| .06          | 822-0006 |
| .04          | 822-0004 |
| .04-.12 Asst | 822-0000 |

## System B Cordless

### System B™ Cordless Fill Unit

Light weight and easy to use, the Fill unit accurately moves filling material apically to create a 3-dimensional fill. The ergonomic hand piece allows for controlled extrusion of either RealSeal™ or traditional gutta percha.



### System B Cordless Pack Unit

The versatile Pack unit features 360° one touch activation that heats instantly for optimal safety, accessibility and control. The lightweight unit is perfect for single motion down pack and creating post space.



### System B Cordless Charger

The charger unit provides maximum convenience. This two-battery charging station is compact and recharges the System B interchangeable batteries in just 2 hours.



### System B Cordless Pack Device 973-2000

Contains: Pack device, 2 Tips (Fine, Fine Medium), charger, 2 batteries, stand

### System B Cordless Fill Device 973-2002

Contains: Fill device, 3- 23ga & 3-25ga needles, charger, 2 batteries, stand, cleaning accessories

#### Pack Tips

|                                   |          |
|-----------------------------------|----------|
| Fine, Fine Medium (1 of each Tip) | 973-2010 |
| Extra Fine Tip (1 Tip)            | 973-2011 |
| Fine Tip (1 Tip)                  | 973-2012 |
| Fine Medium Tip (1 Tip)           | 973-2013 |
| Medium Tip (1 Tip)                | 973-2014 |
| Medium Large Tip (1 Tip)          | 973-2015 |

#### Fill Needles

|                                       |          |
|---------------------------------------|----------|
| Fill Needles Asst (3 each 23ga, 25ga) | 973-2020 |
| 23ga Fill Needles (pkg of 6)          | 973-2021 |
| 25ga Fill Needles (pkg of 6)          | 973-2022 |

#### Accessories

|   |          |
|---|----------|
| Charging Base Kit   | 973-2050 |
| <i>Contains: USB cord and Charging Base</i>                     |          |
| USB Charging Cord   | 973-2052 |
| Battery   | 973-2054 |
| AC Adaptor Kit  | 973-2056 |
| <i>Contains: AC adaptor, power cord and International plugs</i> |          |
| Stand for Pack/Downpack   | 973-2058 |
| Stand for Fill/Extruder   | 973-2060 |
| Heat Insulator (pkg of 5)                                       | 973-2062 |
| Accessory Tool Kit  | 973-2064 |
| <i>Contains: 1 Multi-tool, 2 brushes</i>                        |          |
| Plunger w/installed Plunger head                                | 973-2066 |
| Plunger Head Kit  | 973-2068 |
| <i>Contains: 5 Plastic Plunger Heads &amp; screws</i>           |          |
| High Flow Gutta Percha (100 pellets)                            | 973-2030 |
| Regular Flow Gutta Percha (100 pellets)                         | 973-2035 |
| RealSeal (100 pellets)  | 972-2004 |

## Elements Obturation Unit

The Elements Obturation Unit™ combines our System B™ technology with a motor-driven extruder handpiece to make obturation efficient, predictable, and accurate. From downpack to backfill, the Elements Obturation Unit puts the Continuous Wave of Condensation Technique into one simple-to-operate device that takes up only 1/3 the space of 2 separate machines.

### Elements Obturation Unit 973-0322

### Obturation Unit (w/o Handpieces) 973-0325

|  |          |
|--|----------|
| Extruder Handpiece (w/2 Shields)             | 973-0326 |
| System B Handpiece (w/2 Shields)             | 973-0327 |
| Extruder Handpiece Silicone Boots (pkg of 2) | 973-0329 |
| Extruder Handpiece Silicone Boots (pkg of 2) | 973-0330 |
| Extruder Handpiece Shield (pkg of 2)         | 973-0331 |
| System B Handpiece Shield (pkg of 2)         | 973-0332 |
| Power Supply (Transformer)                   | 973-0333 |
| AC Power Cord, US                            | 973-0334 |
| AC Power Cord, Europe                        | 973-0335 |
| AC Power Cord, UK                            | 973-0336 |

### Elements Obturation Cartridges (pkg of 10)

#### Gutta Percha

|                        |          |
|------------------------|----------|
| Gauge 20 (medium body) | 972-1001 |
| Gauge 20 (heavy body)  | 972-1004 |
| Gauge 23 (medium body) | 972-1002 |
| Gauge 23 (heavy body)  | 972-1005 |
| Gauge 25 (light body)  | 972-1003 |

#### RealSeal

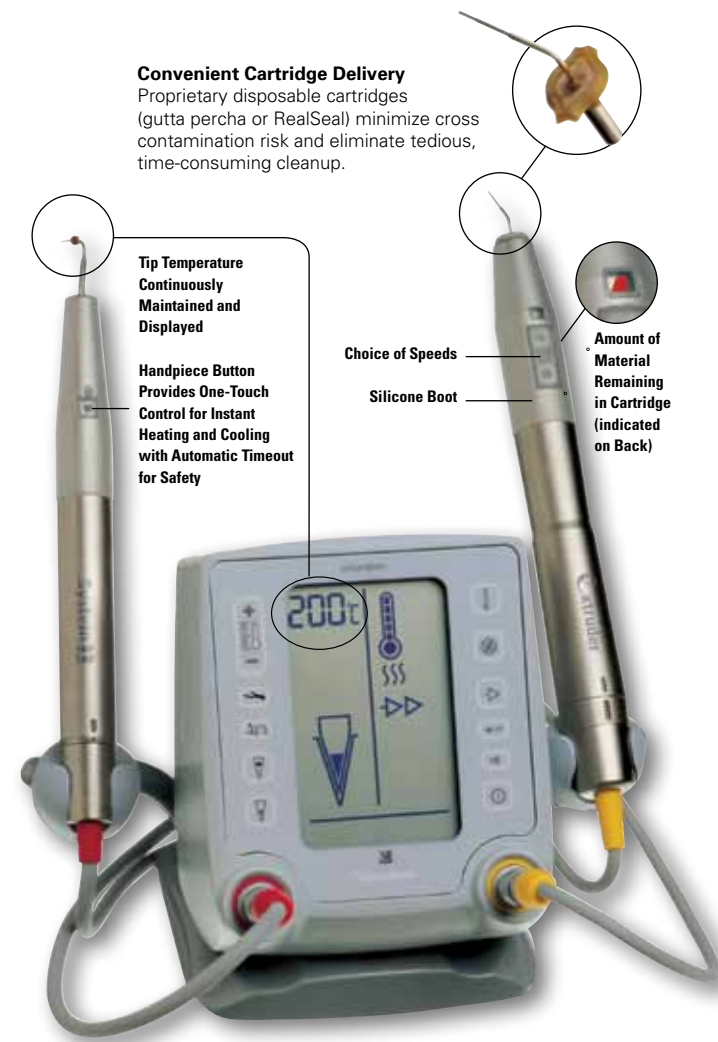
|          |          |
|----------|----------|
| Gauge 20 | 972-2001 |
| Gauge 23 | 972-2002 |



Needle Bending Tool 973-0337

#### Convenient Cartridge Delivery

Proprietary disposable cartridges (gutta percha or RealSeal) minimize cross contamination risk and eliminate tedious, time-consuming cleanup.



Tip Temperature Continuously Maintained and Displayed

Handpiece Button Provides One-Touch Control for Instant Heating and Cooling with Automatic Timeout for Safety

Choice of Speeds

Silicone Boot

Amount of Material Remaining in Cartridge (indicated on Back)

#### .04 Plugger with Smaller Tip Improves Filling

The .04 plugger is 40% smaller which allows access into even the smallest canals. The .04 plugger fits both the original System B and the Elements Obturation Unit.



.04 Plugger 952-0031

Hot Pulp Test Tip 973-0219



## System B Heat Source

SybronEndo is the industry leader in endodontic warm obturation techniques. The System B™ Heat Source provides clinicians with unequalled convenience, reliability, and accuracy. It allows you to dial in the exact temperature setting, which it maintains throughout the procedure. Simply set the temperature, and within 12 seconds, you have a superior apical seal and post space in a single motion. Backfill is just as easy. A sturdy cast-aluminum enclosure with carrying handle makes it easy to carry and place the System B wherever you want. The hand-piece and cord assembly may be disconnected and auto-claved. With SybronEndo's rechargeable battery and charge adapter, you will get at least 1 hour of continuous operation. The System B also accepts SybronEndo's Touch 'n Heat tips.

## Buchanan Heat Pluggers

These high-quality pluggers have a shape that closely matches the final root canal preparation, maximizing condensation forces on the softened obturation material without placing undue stress on the root canal system. Because the Elements Obturation Unit and the System B Heat Source provide an exact temperature throughout the procedure, the Buchanan Pluggers do not over-soften the obturation material, and the warm mass fills lateral canals as easy as it seals apically. When you disengage the heat, the pluggers cool almost instantly and separate easily from the condensed material.

**Buchanan Pluggers (pkg of 5) 952-0003**

### Individual Pluggers



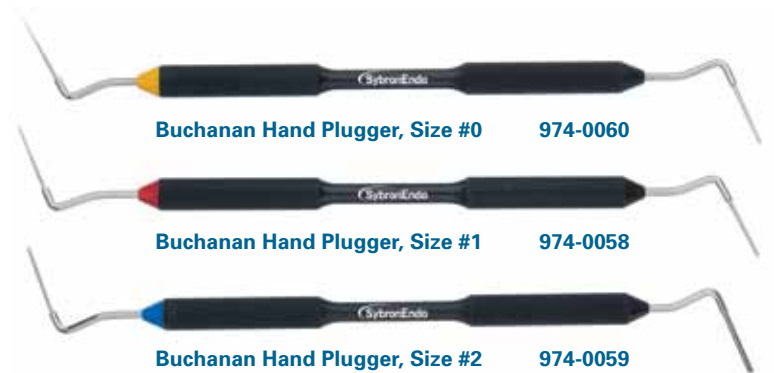
**System B Heat Source, 110v 952-0001**

- System B Charge Adapter, 110v\* 973-0222
- Handpiece Assembly for System B 952-0008
- Pinvise Nut with Contact Spring\* 973-0224
- Small Pinvise Nut Only\* 973-0245
- Plastic Practice Blocks for System B 952-0024
- Contact Clip (pkg of 2)\* 951-0008

*\*Also used with Touch n' Heat.*

## Buchanan Hand Pluggers

Featuring both a tapered nickel-titanium end and a stainless steel end, Buchanan Hand Pluggers can be used in any common obturation technique, including warm and cold condensation. The pluggers are also ideal for backfilling canals. Use the color-coded NiTi end for finishing off condensation procedures in even the most radically curved canals. Either end condenses and controls the movement of gutta percha under pressure. In addition, the Buchanan Hand Pluggers are fabricated of the highest grade materials for excellent durability and sterilization.



## Touch 'n Heat 5004

Designed by Dr. Herb Schilder, the Touch 'n Heat™ conveniently and consistently puts the heat on for warm gutta percha techniques. The patented autoclavable tips are internally heated so that the heat is concentrated at the end where it's needed most. Not only do you have a precisely heated tip to work with, you also can control its temperature. Say "goodbye" to old Bunsen burners and step up to the Touch 'n Heat today.

**Touch 'n Heat 5004, 110v 973-0212**

- Pinvise Nut with Contact Spring\* 973-0224
- Small Pinvise Nut Only\* 973-0245
- Charge Adapter, 110 V\* 973-0222
- Contact Clip (pkg of 2)\* 951-0008

*\*Also used with System B.*



## Auxiliary Gutta Percha

Auxiliary Gutta Percha Points are readily softened by heat and flexible enough to be easily inserted into the canal.

| Auxiliary Sizes                 | Box of 100*       | 6 Vials of 20 |
|---------------------------------|-------------------|---------------|
| Xtra-Fine (XF)                  | 12643             | 14376         |
| Fine-Fine (FF)                  | 13985             | 14377         |
| Medium-Fine (MF)                | 13986             | 14378         |
| Fine (F)                        | 12644             | 14375         |
| Fine-Medium (FM)                | 13987             | 14379         |
| Medium (M)                      | 12645             | 14380         |
| Large (L)                       | 12646 (pkg of 50) | 14381         |
| Assorted (XF, FF, MF, F, FM, M) | 12647             | 14374         |

## Standardized Gutta Percha

Standardized Gutta Percha Points are sized to correspond to the dimensions of SybronEndo standardized endodontic instruments. They are readily softened by heat and flexible to be easily inserted into the canal.

| Standardized Sizes  | Box of 100* | 6 Vials of 20 |       |
|---------------------|-------------|---------------|-------|
|                     |             | US            | EU/ME |
| No. 15              | 12648       | 14382         | 61730 |
| No. 20              | 12649       | 14383         | 61731 |
| No. 25              | 12650       | 14384         | 61732 |
| No. 30              | 12651       | 14385         | 61733 |
| No. 35              | 12652       | 14386         | 61734 |
| No. 40              | 12653       | 14387         | 61735 |
| No. 45              | 12654       | 14388         | 61736 |
| No. 50              | 12655       | 14389         | 61737 |
| No. 55              | 12656       | 14390         | 61738 |
| No. 60              | 12657       | 14391         | 61739 |
| No. 70              | 12658       | 14392         | 61740 |
| No. 80              | 12659       | 14393         | 61741 |
| No. 15-40 Assorted  |             | 14451         | 61748 |
| No. 45-80 Assorted  |             | 14452         | 61749 |
| No. 90-140 Assorted |             | 14453         | 61750 |

\*Not available in Europe.



## Absorbent Points

SybronEndo Absorbent Points are presterilized and highly absorbent. They are made to remove moisture from prepared canals and are rigid enough to be easily inserted and withdrawn while keeping a firmly rolled shape. SybronEndo Absorbent Points are sized to correspond with the dimensions of SybronEndo standardized endodontic instruments.

| Auxiliary Sizes            | Box of 200 | Cell Pack of 200 |
|----------------------------|------------|------------------|
| XX-Fine (XXF)              |            | 16215            |
| X-Fine (XF)                | 13966      | 16216            |
| Fine (F)                   | 13967      | 16217            |
| Medium (M)                 | 13968      | 16218            |
| Course (C)                 | 13969      | 16219            |
| X-Course (XC)              | 13970      | 16220            |
| Assorted (XF, F, M, C)     | 13965      |                  |
| Assorted (XF, F, M, C, XC) |            | 16221            |

| Standard Sizes | Box of 200 | Cell Pack of 200 |
|----------------|------------|------------------|
| No. 80         | 13982      |                  |
| No. 70         | 13981      |                  |
| No. 60         | 13980      | 16231            |
| No. 55         | 13979      | 16230            |
| No. 50         | 13978      | 16229            |
| No. 45         | 13977      | 16228            |
| No. 40         | 13976      | 16227            |
| No. 35         | 13975      | 16226            |
| No. 30         | 13974      | 16225            |
| No. 25         | 13973      | 16224            |
| No. 20         | 13972      | 16223            |
| No. 15         | 13971      | 16222            |

## Xpress Sealers

Three of SybronEndo's classic sealers now boast a new delivery method to help simplify setup, delivery and cleanup. Sealapex®, Tubli-Seal™ and TubliSeal™ EWT are now available in automix syringes. These syringes offer easy mixing at your fingertips in a perfect 1:1 ratio without worry and without manual mixing. This innovative delivery adds efficiency, convenience and simplicity to a line of sealers that is already steadfast and dependable.

|  |              |
|--|--------------|
| <b>Sealapex Xpress (2 – 10.5g syringes)</b>      | <b>33639</b> |
| <b>Tubli-Seal Xpress (2 – 10.7g syringes)</b>    | <b>33640</b> |
| <b>TubliSeal EWT Xpress (2 – 10.8g syringes)</b> | <b>33641</b> |
| 50 mixing tips                                   | 33680        |



### Sealapex

Sealapex® is the original non-eugenol, calcium hydroxide polymeric root canal sealer that promotes rapid healing and hard tissue formation.

|   |              |
|---|--------------|
| <b>Sealapex</b>   | <b>18432</b> |
| Bulk package contains: 24 sets of base and accelerator, 6 mixing pads | 18589        |



### Tubli-Seal

Tubli-Seal™ is a paste/paste zinc oxide eugenol root canal sealer. It is light in color, nondarkening and radiopaque.

|   |              |
|---|--------------|
| <b>Tubli-Seal</b>   | <b>00340</b> |
| Bulk package contains: 24 sets of base and accelerator, 6 mixing pads | 01081        |



### Tubli-Seal EWT

Tubli-Seal™ EWT offers all of the benefits of Tubli-Seal with the added benefit of a longer working time.

|                       |              |
|-----------------------|--------------|
| <b>Tubli-Seal EWT</b> | <b>25903</b> |
| Mixing pads           | 28366        |

## Pulp Canal Sealer & Pulp Canal Sealer EWT

Pulp Canal Sealer™ is a zinc oxide eugenol sealer that has a powder base and liquid catalyst. It is a non-toxic and non-irritating formulation that is very radiopaque. Pulp Canal Sealer™ EWT features a work time of greater than 6 hours on the pad.

|                              |              |
|------------------------------|--------------|
| <b>Pulp Canal Sealer</b>     | <b>24875</b> |
| <b>Pulp Canal Sealer EWT</b> | <b>24746</b> |
| Case Lot Powder Refill       | 24745        |
| Case Lot Liquid Refill       | 24873        |





## MiniEndo II

The MiniEndo II is a sleek, compact ultrasonic unit designed specifically for endodontic applications and to deliver the right amount of power and amplitude at the tip to successfully complete endodontic procedures.

**MiniEndo II Ultrasonic Unit Type S, 110v** 973-0236  
**MiniEndo II Ultrasonic Unit Type S, 220v with handpiece** 763-1001

### Accessories

Wrench for Ultrasonic Tips 973-0096  
 MiniEndo Handpiece (M3x.6) Type S 973-0201



## The "4" Series

The "4" series is geared for troughing around posts and opening calcified canals. SybronEndo recommends that the clinician begin at level one and increase according to personal comfort level.

**UT-4** 973-0039  
**SJ-4** 973-0041  
**CT-4** 973-0057



## Spreader Tips

Longer than our "4" series, Spreader Tips are designed for troughing within the canal. Spreader Tips can trough around posts or break open a calcification, but also can be used to help retrieve separated files that are stuck in the apical third of the canal.

**SP-1 Small Spreader Tip** 973-0063  
**SP-2 Medium Spreader Tip** 973-0065  
**SP-3 Ultra-Fine Spreader Tip** 973-0067



## BK-3 Tips

Our BK-3 surgical tips have three bends for easy access to any preparation, including MB2 canals. BK-3s provide excellent visibility and can finish an entire prep with one tip. Water is directed down the three bends and is able to reach the surgical site. BK-3s are for use with any application.

**BK3-R Upper Right/Lower Left Tip** 973-0110  
**BK3-L Upper Left/Lower Right Tip** 973-0112

## Ultrasonic Tip Introductory Kit

SybronEndo's Starter Tip Kit is the perfect entry for those who recognize the benefits ultrasonics can provide for their office. Each kit contains one: SP-2, Scaler, CT-4 and Diamond-Coated CT-4.

**Ultrasonic Tip Introductory Kit** 973-1000



## Specialty Tips

**ST 973-0074**  
 Scaler tip used to break away cement or calculus. The ST-1 is similar to the CT-4 except for its curvature for better access in difficult-to-reach areas within the tooth structure.

**VT 973-0069**  
 The vibrator tip is designed to vibrate a post out, vibrate a crown or bridge off or help seat a crown.

**CK 973-0061**  
 The Carr-Kanter Back-Action Ultrasonic Tip is used to reach tough areas such as MB2 canals.



## UT Tips

**UT-1 Initiating Tip** 973-0033

Straight-line tip with 90° angle used to initiate the preparation.

**UT-2 Universal Right Tip** 973-0035

Angled tip for use on upper right and lower left to complete the prep.

**UT-3 Universal Left Tip** 973-0037

Angled tip for use on upper left and lower right to complete the prep.



## SJ Tips

**SJ-1 Initiating Tip** 973-0084

Straight-line tip with 90° angle used to initiate the preparation.

**SJ-2 Slim Jim Right Tip** 973-0078

Angled tip for use on upper right and lower left to complete the prep.

**SJ-3 Slim Jim Left Tip** 973-0080

Angled tip for use on upper left and lower right to complete the prep.



## CT Tips

**CT-1 Initiating Tip** 973-0059

Straight-line tip with 90° angle used to initiate the preparation.

**CT-2 Main Right Tip** 973-0053

Angled tip for use on upper right and lower left to complete the prep.

**CT-3 Main Left Tip** 973-0055

Angled tip for use on upper left and lower right to complete the prep.



## Diamond-Coated Ultrasonic Tips

Our most popular Ultrasonic Tips are also available with a diamond coating, improving their cutting efficiency and durability.

- CT-4 Straight-Line Tip (our most popular)** 973-1057
- CT-1 Initiating Tip** 973-1059
- CT-2 Right Tip** 973-1053
- CT-3 Left Tip** 973-1054
- UT-4 Straight-Line Tip** 973-1039
- CK Carr-Kanter Back-Action Tip** 973-1060
- SP-2 Medium Spreader Tip** 973-1065
- BK3-R Upper Right/Lower Left Tip** 973-1110
- BK3-L Upper Left/Lower Right Tip** 973-1111

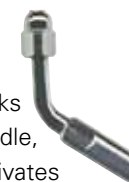


CT-4 CT-1 CT-2 CT-3 UT-4 CK SP-2 BK3-R BK3-L

## File Adapter

The File Adaptor, used with NiTi blanks or K-Files (sizes 15-35) without a handle, can be inserted into the chuck. It activates irrigant in the canal, thereby increasing the effect of irrigation by acoustic streaming.

**File Adapter** 973-0031



## RedStar Tips



RedStar Tips are innovative in ultrasonics. These tips provide a wide range of functionality and efficiency and are intended for use by both the novice clinician and the expert specialist. Developed in collaboration with Dr. Richard Mounce, these tips are designed with safety in mind first and will enable the clinician to handle various endodontic cases.

**RedStar-1 Spreader Tip**

- Helps remove cement around posts
- Opens calcified canals
- Removes isthmus tissue between canals



**Redstar-1 Spreader Tip**

973-1040

**RedStar-2 Planing Tip**

- Removes pulp stones smoothly and safely from pulp chamber without scoring
- Smooths the axial walls and floor of the pulp chamber
- Shaves thin layers of dentin without cutting too deep



**Redstar-2 Planing Tip**

973-1041



**Soft•Core<sup>®</sup>**  
Carrier-Based Obturators



**Rider<sup>™</sup>**  
Digital Apex Locator



Empty rectangular box for notes.