



Diaphragm seal MD 30

Part no. 31417W

Diaphragm seal MD 30 standard version with threaded connection

benefits

- can be disassembled and cleaned
- Applications up to 250 bar
- welded diaphragm
- many process connections available

Application

For mounting to Bourdon tube pressure gauges, pressure transducers or pressure switches. For corrosive, viscous, polluted or hot media.

Technical Specifications

Process connection/lower body

Stainless steel 316 L
G $\frac{1}{2}$ B

diaphragm

Stainless steel 316 L

Seal

FKM (Viton)

Instrument connection

Stainless steel 316 L
Welded connection

retaining flanges

Stainless steel 316 L

Spacer ring

PN 25

screws and nuts

Stainless steel 304

pressure transmission liquid

Paraffin oil (FM 09), FDA-listed

pressure range

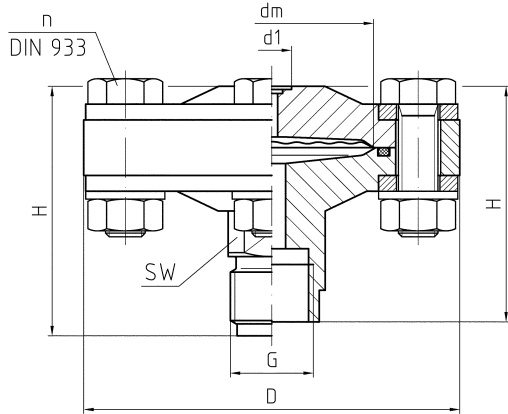
see overview of versions

Nominal pressure

PN 25

Technical Drawings

Type MD 30



| G | d1 | PN | dm | D | H | n | SW |
|---------|----|-----|----|----|----|-------|----|
| G½ | 10 | 25 | 36 | 95 | 60 | 4xM10 | 22 |
| G½B | 10 | 25 | 36 | 95 | 63 | 4xM10 | 22 |
| ½-14NPT | 10 | 25 | 36 | 95 | 63 | 4xM10 | 22 |
| G½ | 10 | 100 | 36 | 95 | 60 | 4xM10 | 22 |
| G½B | 10 | 100 | 36 | 95 | 63 | 4xM10 | 22 |
| ½-14NPT | 10 | 100 | 36 | 95 | 63 | 4xM10 | 22 |
| G½ | 10 | 250 | 56 | 95 | 56 | 8xM10 | 22 |
| G½B | 10 | 250 | 56 | 95 | 79 | 8xM10 | 22 |
| ½-14NPT | 10 | 250 | 56 | 95 | 76 | 8xM10 | 22 |

Versions

| Process connection | standard | Instrument connection | Nominal pressure | minimum range* (in bar) at nominal size | | | | | Part no. | |
|--------------------|----------|-----------------------|------------------|---|---------|---------|---------|--------------|----------|--------|
| | | | | 63 | 100 | 160 | DMU | DMU 13 Vario | | |
| G½B | | Welded connection | PN 25 | 0.6 bar | 0.6 bar | 0.6 bar | 0.6 bar | 0.6 bar | ● | 31417W |

● in-stock items

● Non-stock items