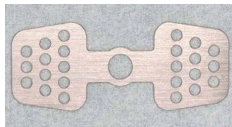


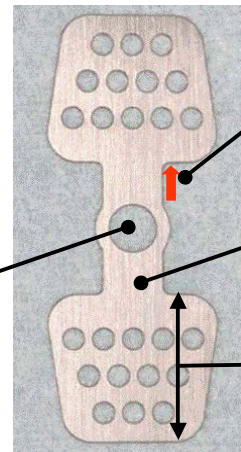
## NEW AUGMENTATION BONE WING

- Frame work for GBR
- Much easier than using a Non-Resorbable membrane
- FTwing compatible with the following systems  
3i (External Hex),...

Φ3.0mm Center hole on top of standard implant hexagon



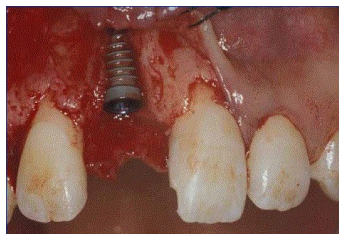
actual size  
•11.5 X 29mm 0.2mm thick



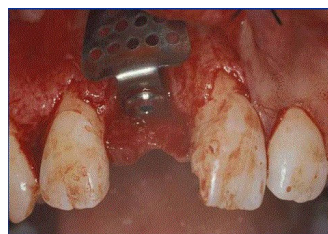
FTwing

## PROTOCOL FOR FTWING

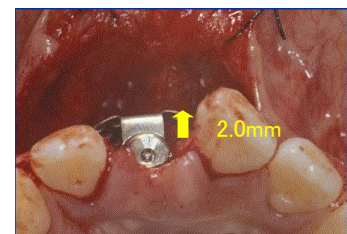
Akiyoshi Funato, DDS



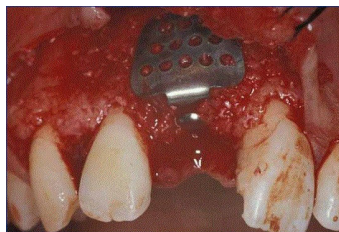
**Figure 1.** The implant was placed as the correct position by using #2710 bur kit.



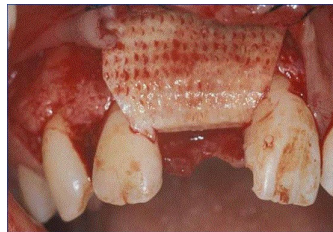
**Figure 2.** FTwing was trialed over the implant. It was cut and bent with pliers to create the bone regeneration space.



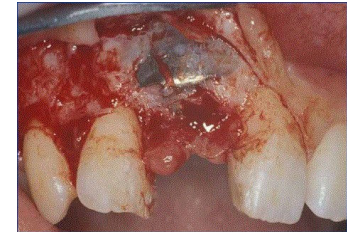
**Figure 3.** FTwing was set on the implant with a cover screw.



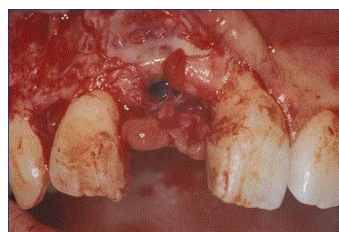
**Figure 4.** Graft materials were filled between the FTwing and implant.



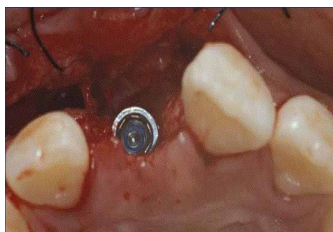
**Figure 5.** A resorbable membrane was placed over them.



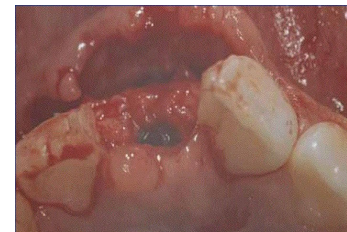
**Figure 6.** After six months, the FTwing was removed.



**Figure 7.** Sufficient buccal bone volume was achieved around the implant.



**Figure 8.** Comparison between the condition at the implant placement.



**Figure 9.** 2.0mm buccal bone width was achieved by using FTwing.

\*Dr.Funato original diamond bur kits. IMPLANT INNOVATIONS JAPAN Inc. sell 2710 bur kit in JAPAN.