

Grass Identification



Contact:
Tony Koski, PhD
970-222-1450
tony.koski@colostate.edu

Before we get started...

- Work in pairs...or, at most, group of 3
- Use the magnifiers
- Ask for help! And participate!
- You WON'T be an expert at grass ID at the end of this workshop
- You WON'T become an expert (or just good) at grass ID....unless you practice...and practice...and practice

Why Identify Grasses?

- Management Requirements
 - water, fertilizer, mowing heights



Bluegrass, fescues, ryegrass



Buffalograss, bermudagrass

Why Identify Grasses?

Management

Requirements

- water, fertilizer, mowing heights

Pest Management

- pest identification
- use pesticides according to label



Why Identify Grasses?

Management Requirements

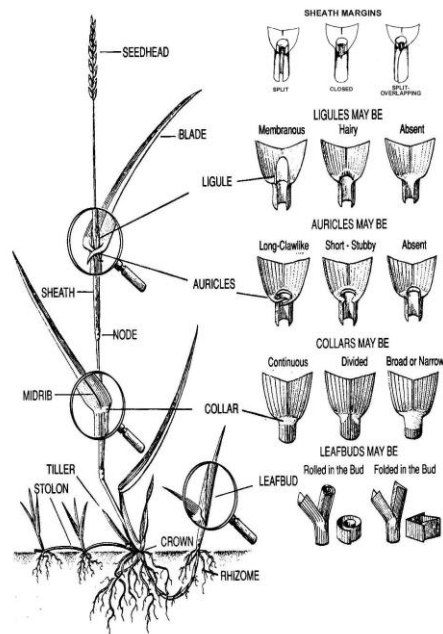
- water, fertilizer, mowing heights

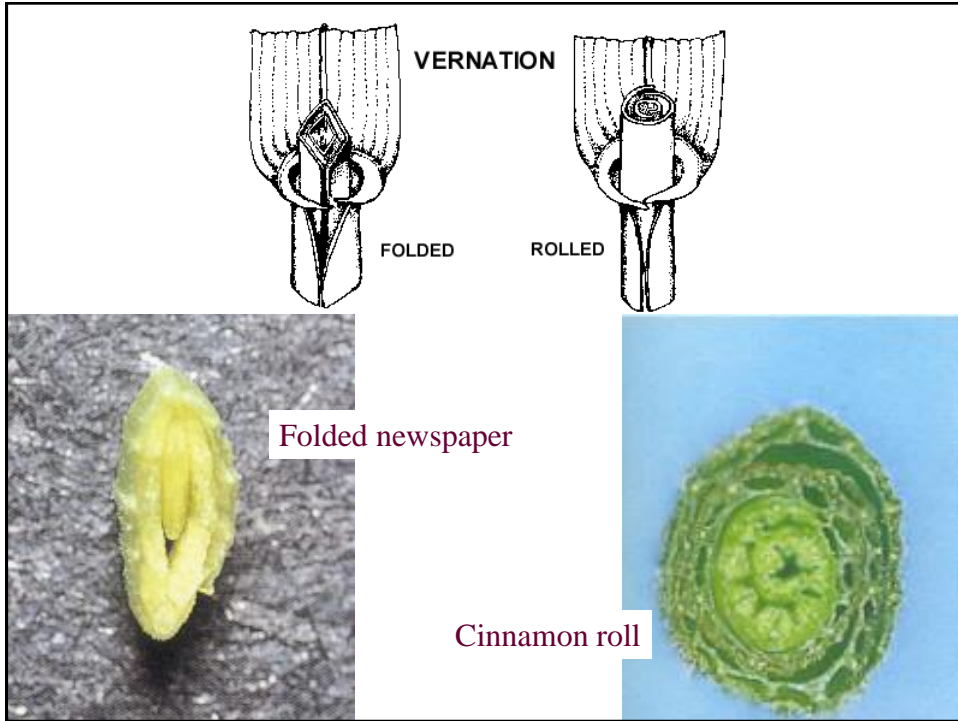
Pest Management

- pest identification
- use pesticides according to label

Weed Control

- proper control products, rates, timing



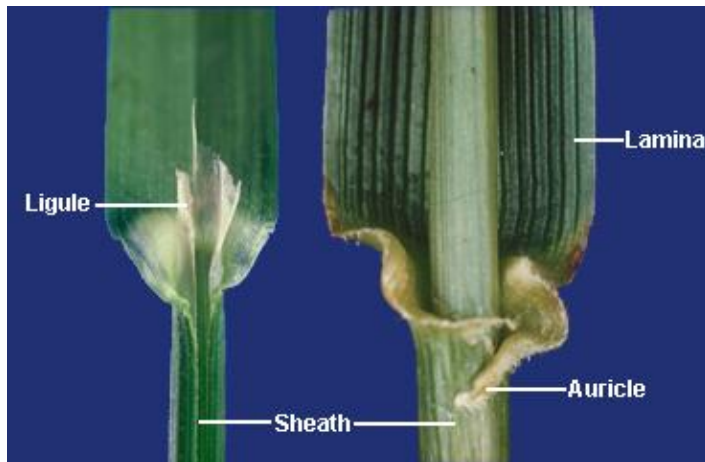


Two Types of Vernation



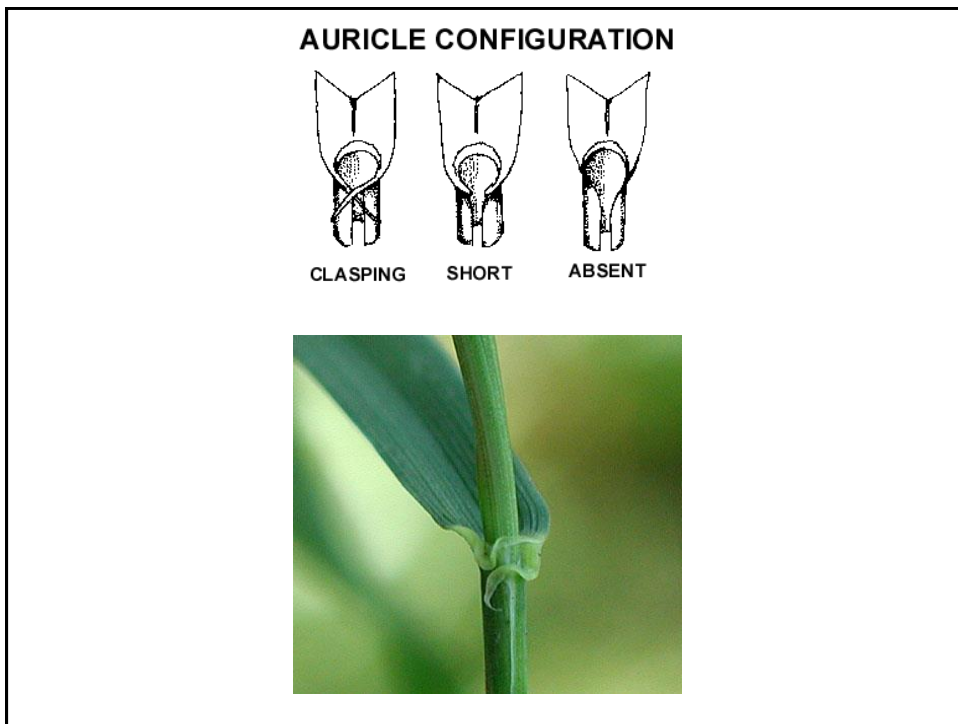
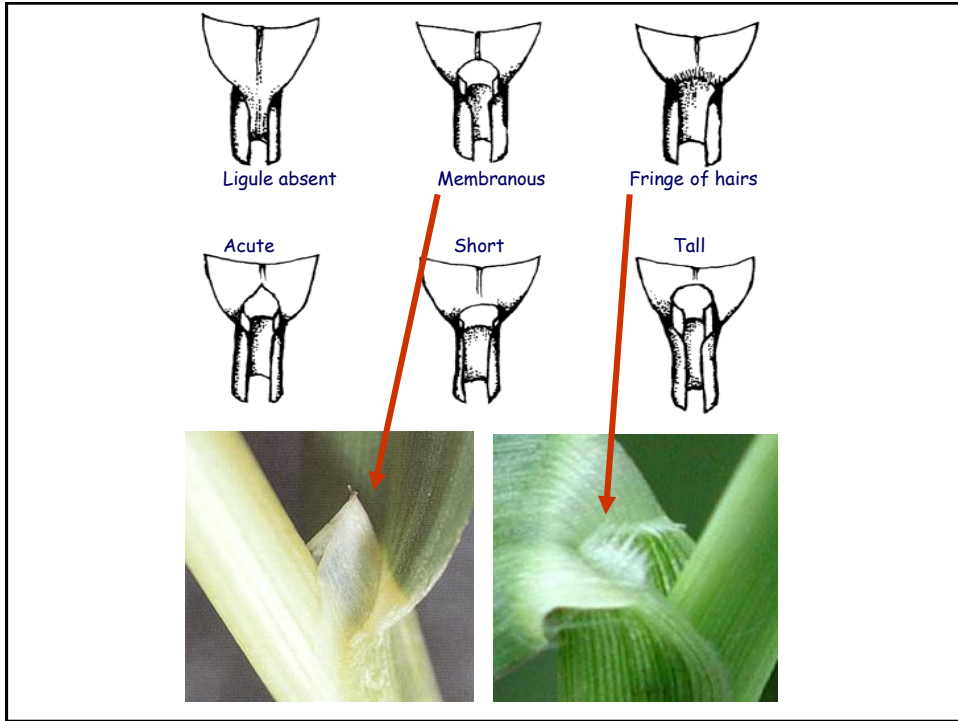
Rolled vernation

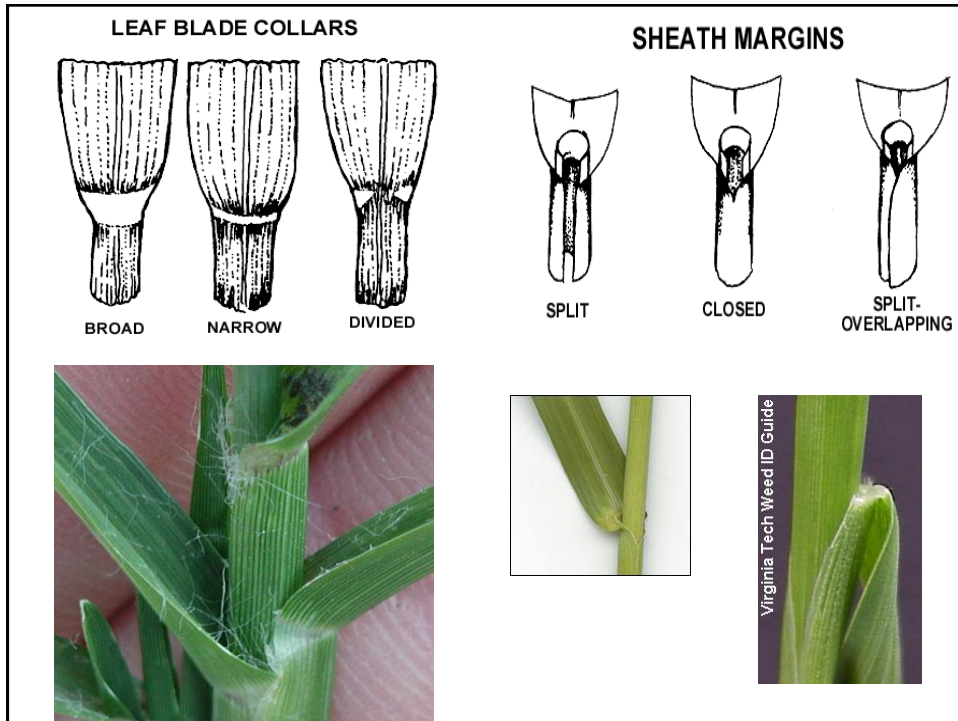
Leaf is curling under itself
in the shoot



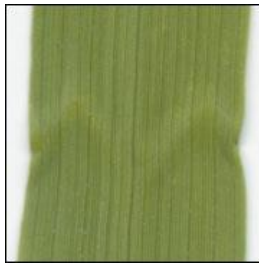
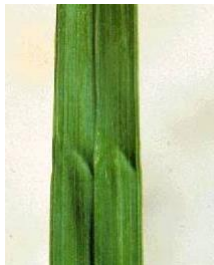
Ligules and Auricles

Where the sheath meets the blade of the grass





What is a “watermark”?
A small “wrinkle” on the leaf blade



Don't focus on the watermark!
They are unreliable and often variable

Stoloniferous

Rhizomatous

Bunch-type

Stoloniferous and rhizomatous grasses “creep”

- Bluegrass
- Quackgrass
- Bermudagrass
- Creeping bentgrass

Bunch grasses form clumps

- Perennial ryegrass
- Tall fescue
- Blue grama

Other Characteristics Used for Grass ID

- Annual or perennial?
- Warm-season vs. cool-season species?
- Favored growing conditions
 - ✓ Sun or shade?
 - ✓ Wet or dry?
 - ✓ Trafficked or compacted?
- Leaf color, texture
- Patches or bunch-type growth?

Grass Identification Resources

North Carolina State University

<http://turfid.ncsu.edu/>

University of Missouri Weed ID Website

<http://weedid.missouri.edu/index.cfm>

University of Illinois Turf ID book

<https://pubsplus.uiuc.edu/C1393.html>

