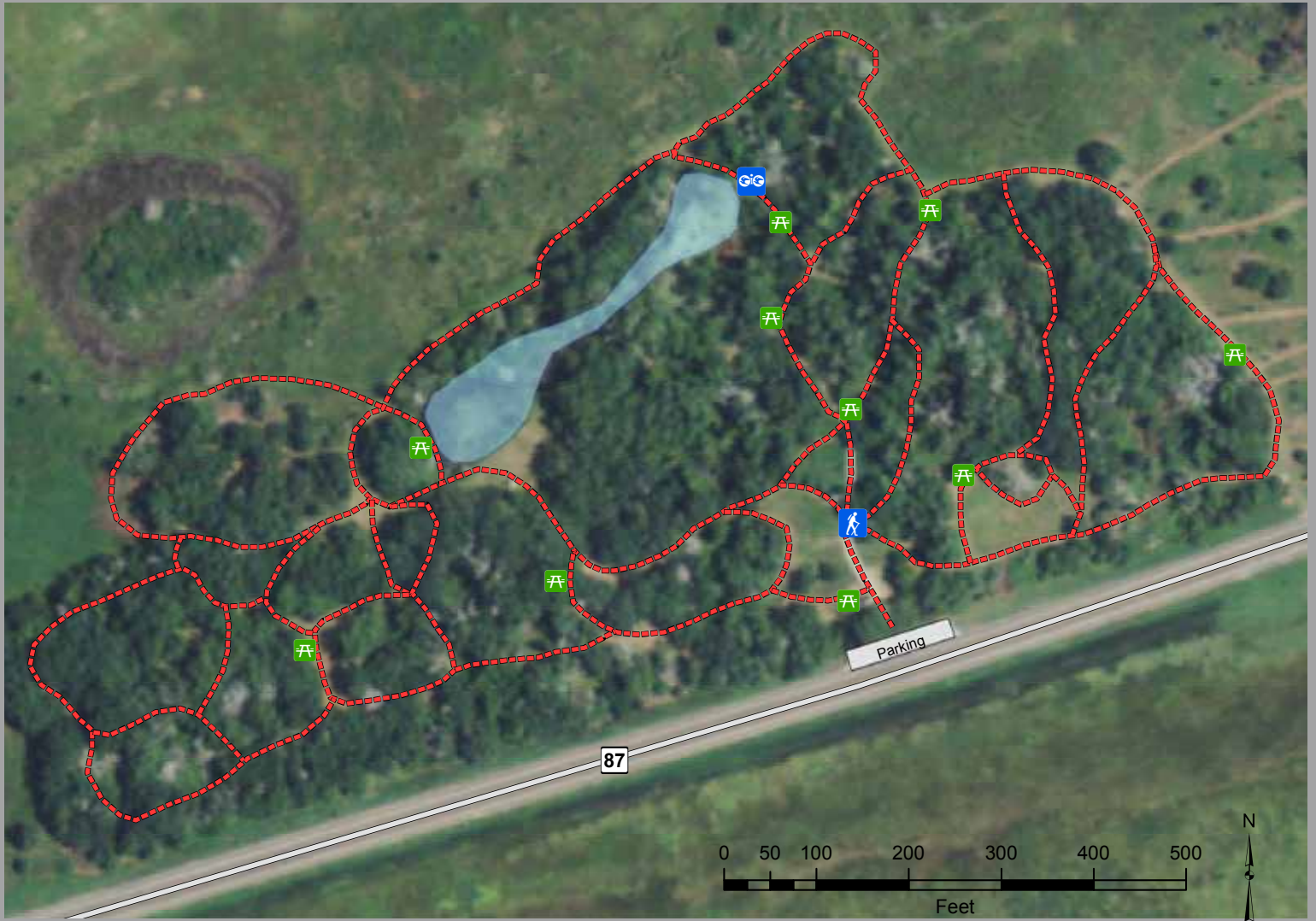


# TEXAS ORNITHOLOGICAL SOCIETY SABINE WOODS SANCTUARY



**Trail Length: Variable**  
**Trail Surface: Natural**  
**GPS Coordinates: 29° 41' 53" N 93° 56' 52" W**  
**Directions: From Port Arthur, Take State Highway 87/S Gulfway Dr. for approximately 13 miles to Sabine Pass. Take a right at the four way stop in Sabine Pass and continue on State Highway 87/S Gulfway Dr. The refuge will be on your right in about 4.1 miles.**

**Legend**

- Trailhead
- Viewing Area
- Bench
- Sabine Woods Trails
- Road
- Pond
- Parking

**Sabine Woods Activities**

- Birding
- Wildlife Photography



**BEAUMONT**   
[www.beaumontcvb.com](http://www.beaumontcvb.com)

Disclaimer: The Sabine Woods are managed by volunteers, therefore the trail length and conditions are subject to change.