

Lazy Mountain Trail

Non-motorized summer trail

Tread surface:	Dirt surface, 2' - 4' wide
Length:	2 1/2 miles (4 kilometers)
Difficulty:	Moderate to difficult
Activity:	Summer – hiking, backpacking, mountain running
Trailhead:	Large parking area; public toilet facilities; picnic tables (3) and fire ring
Nearest town:	Palmer
Information:	MSB Parks and Outdoor Recreation (Phone 745-9690)
Manager:	Recreational Services Division (Phone 745-9578)
Volunteer Trail Care Crew:	vacant

How to get there

Access to the Lazy Mountain Trail is at the south end Huntley Road. From Palmer- go east on the Old Glenn Highway, 2 1/2 miles from Palmer take a left on Clark-Wolverine Road, proceed 1/2 mile to a T intersection, take a right on Huntley Road, follow it to the end, take a right to the Lazy Mountain Recreation Area and trailhead.

General description

The Lazy Mountain Trail is a steep hiking trail traversing the west slope of Lazy Mountain, climbing 3000 feet in less than 2 1/2 miles. The first half of the trail travels through wooded areas of cottonwood, spruce, birch, aspen and tall grasses. At about the 1500 foot elevation the trail crosses into alpine tundra and offers good views of the Knik and Matanuska Rivers, and the Cook Inlet. The trail is challenging and tends to be muddy and slippery after a rain or frost. Caution is advised. The round trip hike takes about 4 hours to complete by the average hiker.

The more adventurous can continue on a primitive route along a ridge to Matanuska Peak (elevation 6,119') about 4 miles to the southeast. Matanuska Peak is also reached from the Matanuska Peak Trail off the east end of Smith Road.

Trail uses

The Lazy Mountain Trail is maintained by the MSB Parks and Outdoor Recreation Division for hiking. An annual mountain running event is held on Lazy Mountain and Matanuska Peak in July. For more information about the mountain running in Alaska [link](http://www.alaskamountainrunners.org) to <http://www.alaskamountainrunners.org>

***Take note**

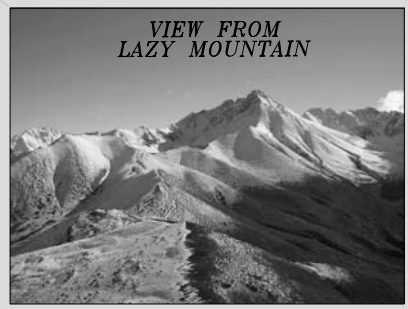
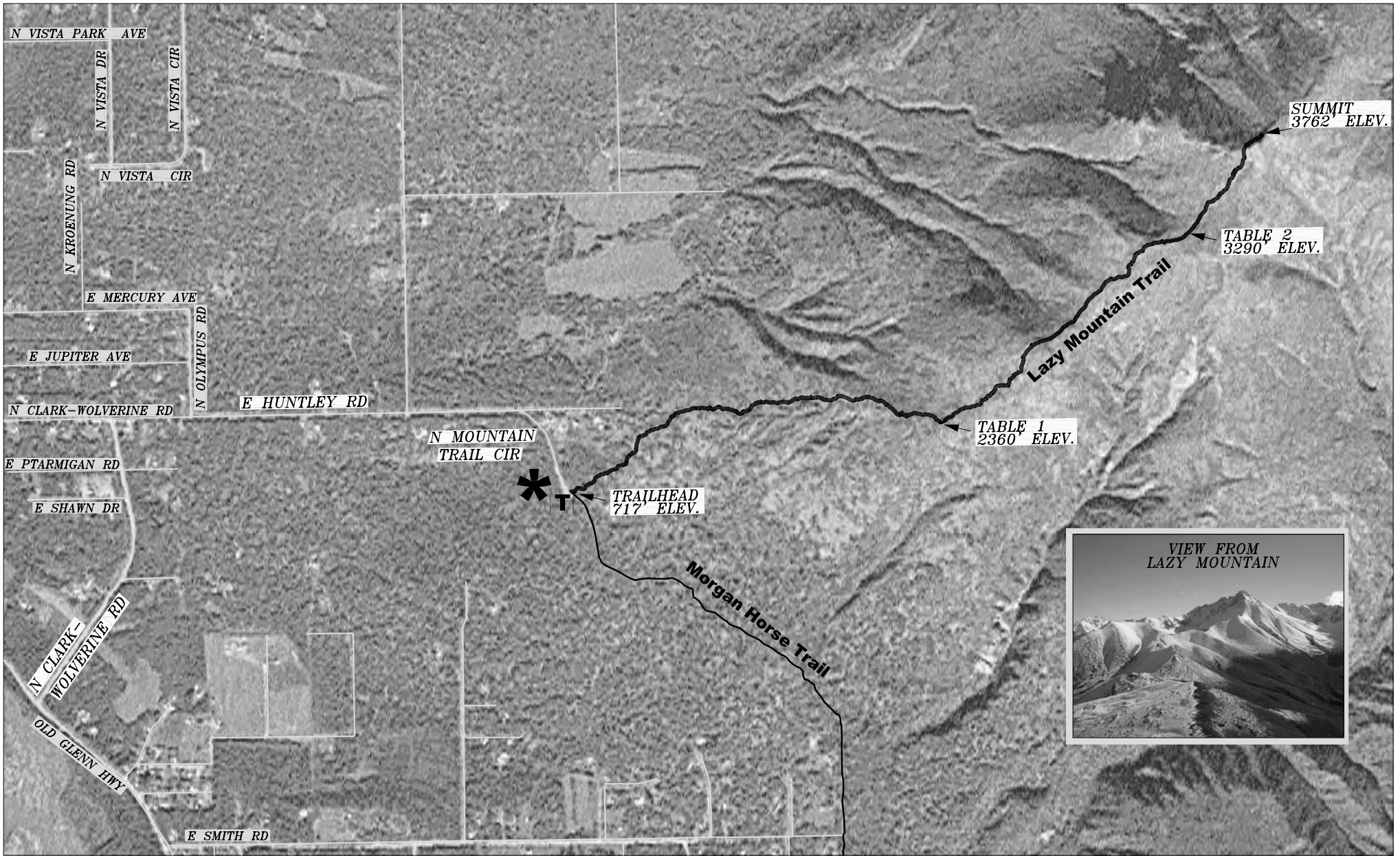
Dogs must be kept on leash and/or under your control. Bears and other wildlife are native to the area and proper precautions should be taken to make your presence known.

Lazy Mountain Trail



**Matanuska Susitna Borough
Community Development Department
350 E. Dahlia Avenue
Palmer, Alaska 99645**

**(907) 745-9578
www.matsugov.us**



LEGEND

T Trailhead



***** Winter Ski Trail System