



# Port Everglades Master / Vision Plan Status

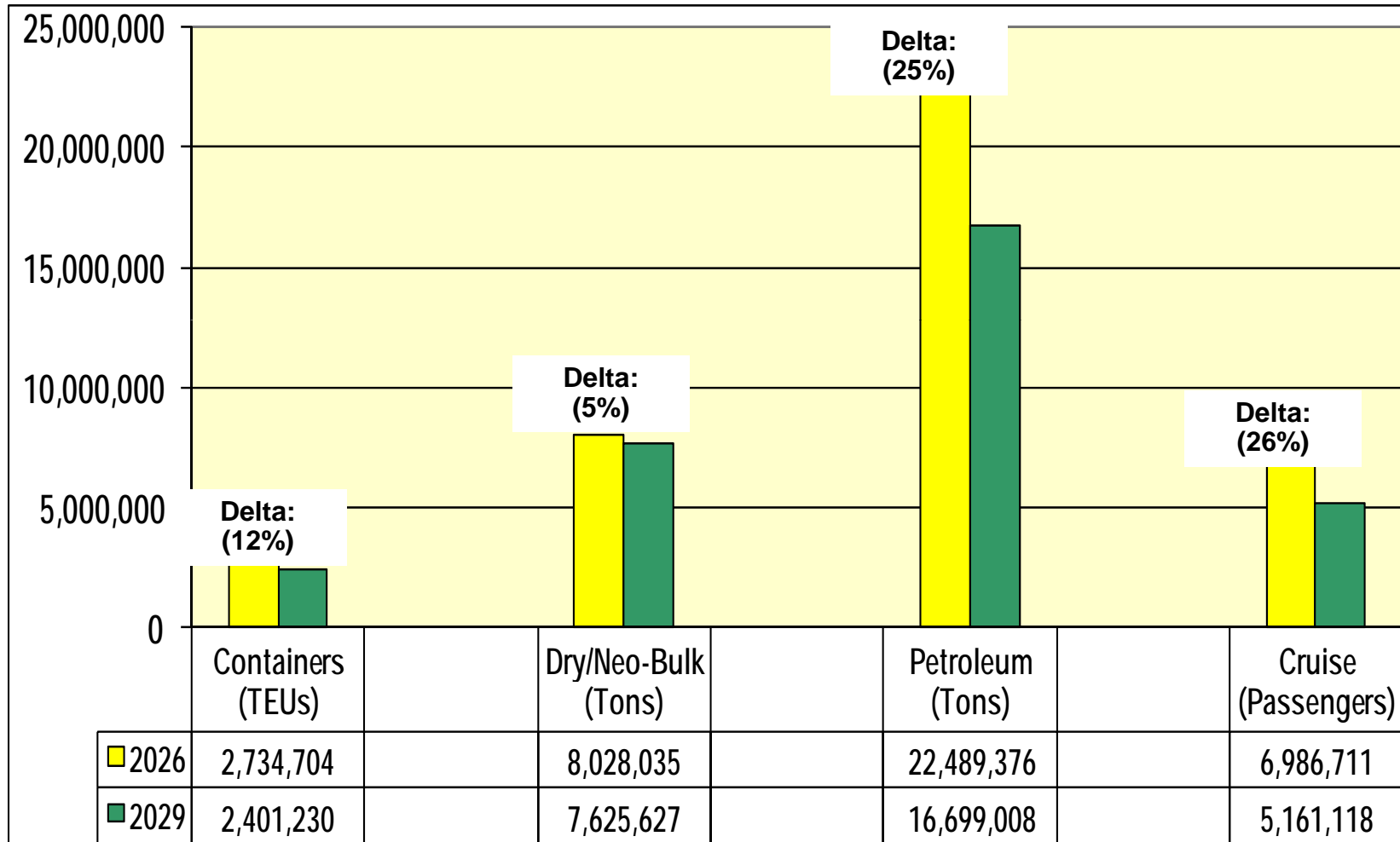
Focus Group Meeting

June 24, 2010

# Today's Presentation

- Market Assessment and Infrastructure Needs Overview
- Progress on 2006 Master Plan Projects
- Bulkhead Replacement Summary
- Updated Plans
  - 5 year Master Plan and 10 and 20 year Vision Plans
  - Projects and Estimated Total Cost
- Upcoming Master Plan Presentations

# Summary of Market Assessments



# Summary of Facility/Infrastructure Needs

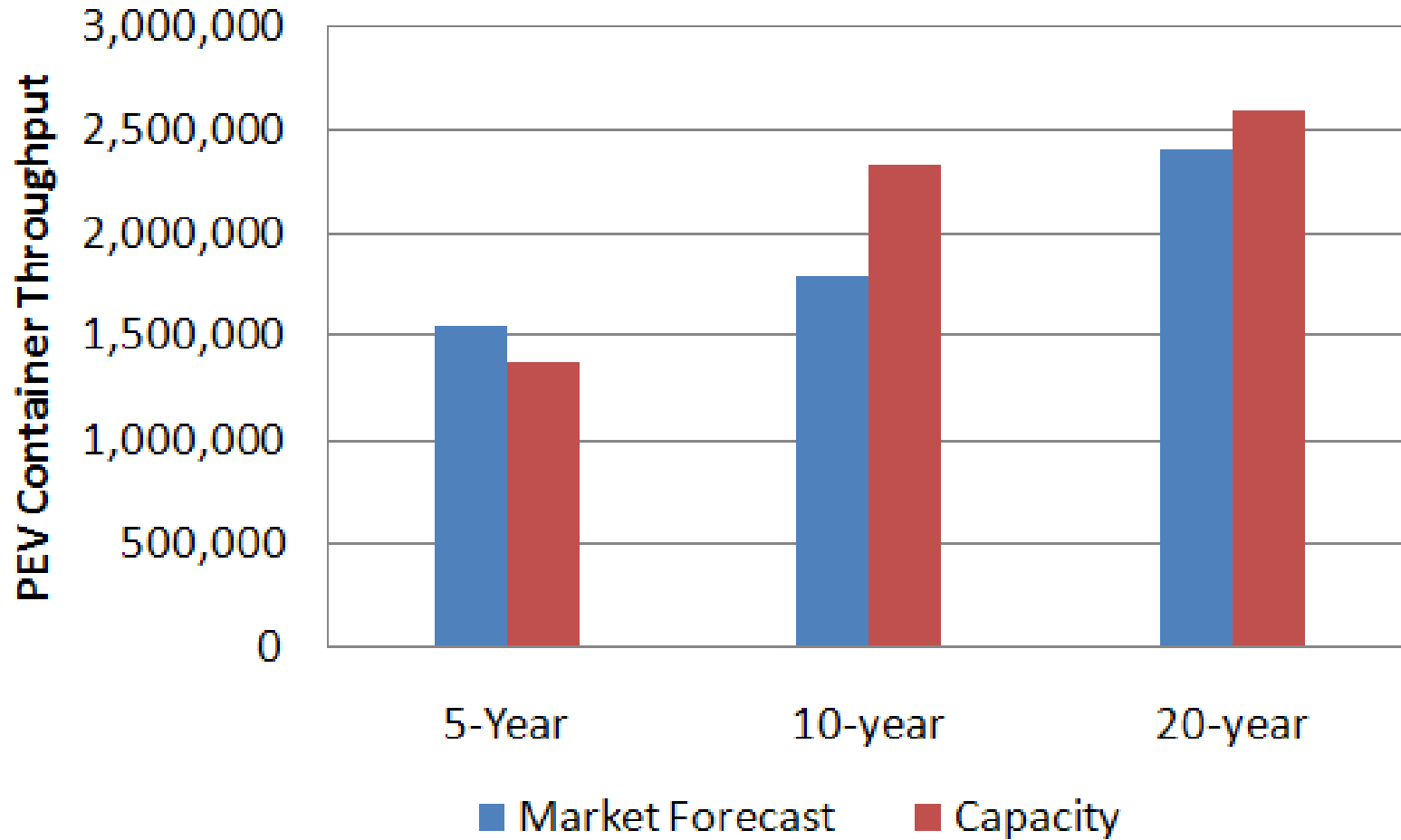
## Over 20 year planning horizon

- Ability to berth fully laden Post-Panamax vessels; 7,000 TEUs
- More and longer cargo berths
- Rail to Southport and ICTF
- New berth for crushed rock/aggregate ship
- Longer cruise berths
- Reconfiguration of Northport slips
- Upland improvements to terminals and intermodal access

# Berth Configuration Based on Market Forecast

	5-Year Master Plan		10-Year Vision Plan		20-Year Vision Plan	
	2009	2006	2009	2006	2009	2006
<b>Containers</b>						
STS crane	3	3	4	5	5	6
RORO ramps	2	2	2	2	1	3
Ship Mounted crane	1	1	3	1	1	1
Shared berth LOLO/RORO	1	1	1	1	0	0
Shared berths container/cruise	2	2	2	3	2	2
<b>Non-Containers</b>						
Cement	<2	<2	<2	<2	<2	<2
Aggregate	0	1	1	1	1	1
General Cargo	0	0	0	1	1	1
<b>Cruise</b>						
Dedicated berths	6	6	6	6	6	6
Shared berths container/cruise	2	2	2	2	2	2
<b>Petroleum</b>						
Petroleum Vessel	3	3	3	3	3	3
Petroleum Barge	0	0	0	1	1	1

# Market Forecast vs. Container Handling Capacity



# Status of 2006 Master Plan Projects

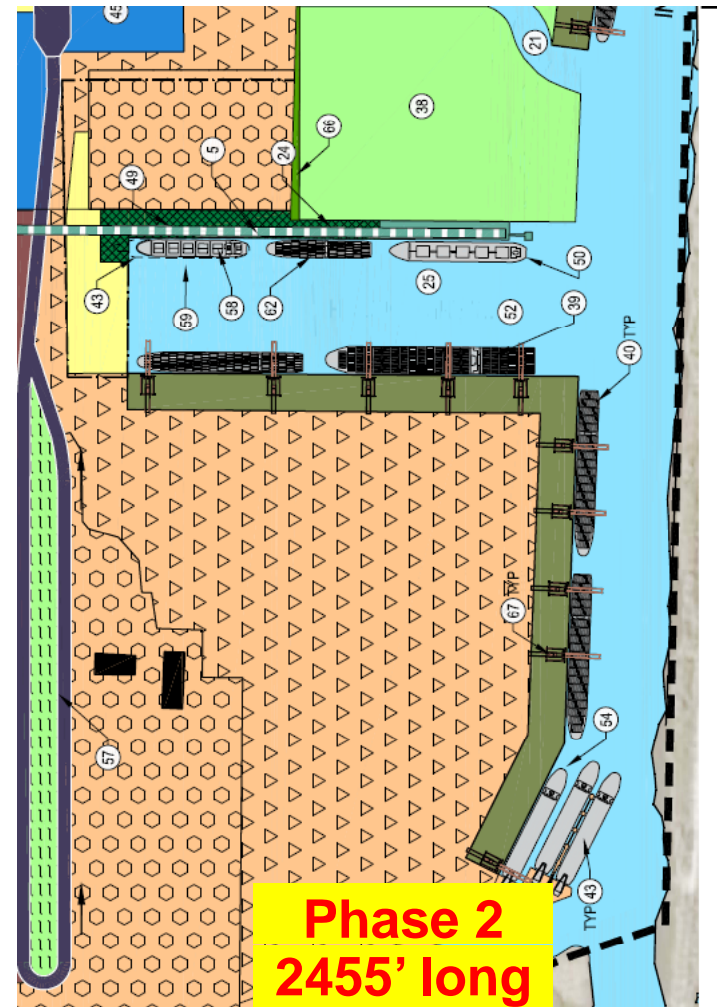
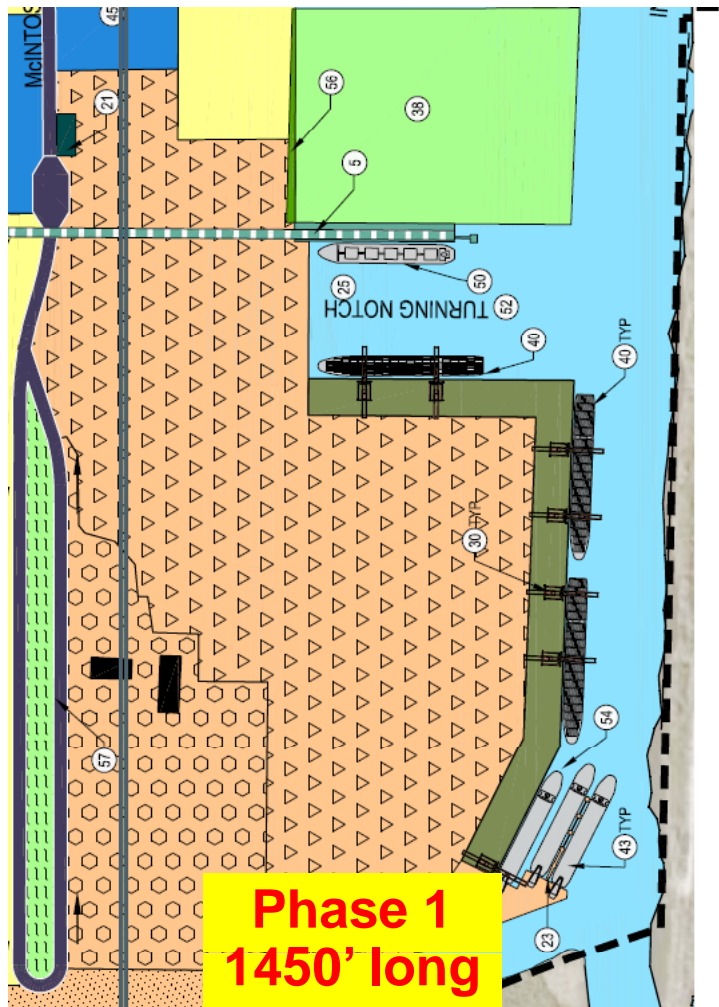
Project	Status
Midport Roadway (Eller Drive) Improvements	Completed and in operation
Mobile Harbor Crane at Midport	Completed
Cruise Terminal 18 Expansion	Completed and in operation
Intermodal Bridge over FPL Canal	Opened June 10
Southport Container Yard Improvements	Construction to be completed in October 2010
Eller Drive Overpass	Construction procurement begins in 2011
McIntosh Road Improvements	Construction procurement begins in 2011
By-Pass Road	Design in progress Phase 1 construction procurement begins in Jan 2011 Phase 2 construction procurement begins in Sept 2012
Cruise Terminal Improvements at CT 2, CT 19, CT 21 and CT 26	In planning

# Bulkhead Replacement Schedule Summary

- 5-year Plan
  - Berths 9,10
- 10-year Plan
  - Berths 1,2,3
  - Berths 16, 17, 18
- 20-year Plan
  - Berths 19, 20
  - Berths 7, 8, 8A
  - Berths 21, 22
  - Berths 14, 15
  - Berth 4
  - Berths 23, 24, 25
  - Berths 11, 12, 12A, 13, 13A



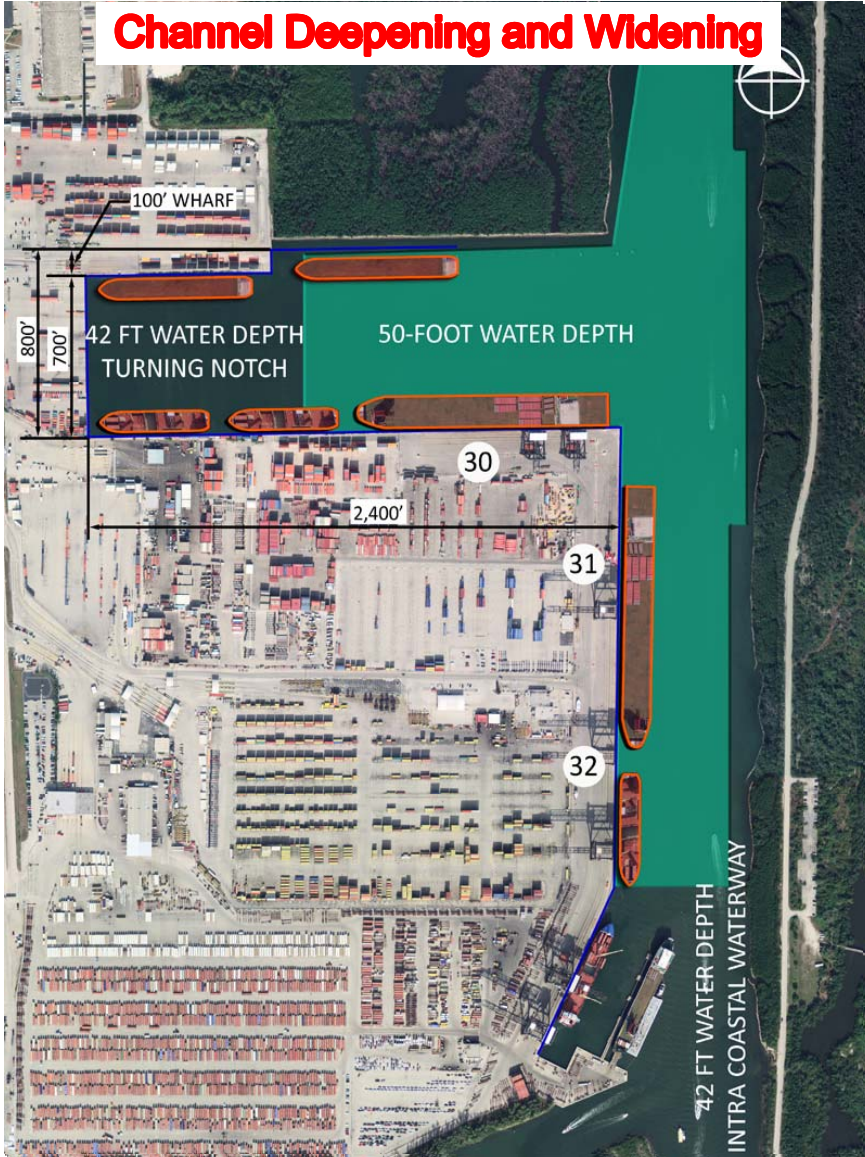
# In 2006 Master Plan Turning Notch was Expanded in Two Phases



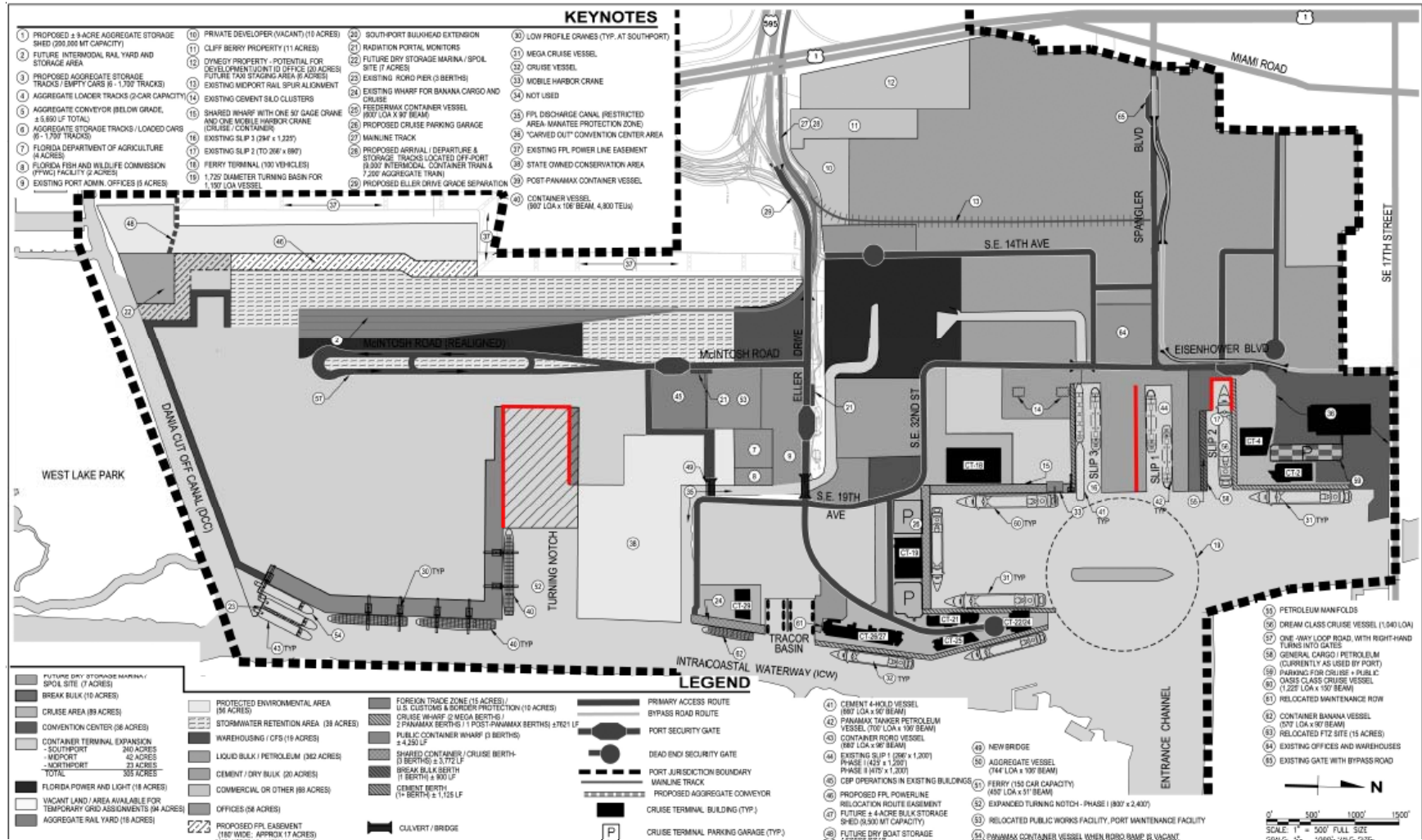
# Turning Notch Expansion Project

- TN Project 1, Turning Notch Expansion (at Existing Water Depth)
  - May 4, 2010 BCC supports the expansion project
  - June 15, 2010 BCC approves agreement with FDEP on release of Conservation Easement
  - Phase 1 included in Port's 5-year Capital Improvement Program
- TN Project 2, Channel Deepening and Widening
  - No need for Locally Preferred Plan (LPP)
  - May 4, 2010 BCC supports continuing with fully funded ACOE study
  - ACOE schedule calls for
    - May 2011 – Draft Feasibility Study Released for Public Comment
    - Nov 2012 - Design Start
    - Jan 2015 - Construction Start

# Turning Notch



# 5-year Master Plan



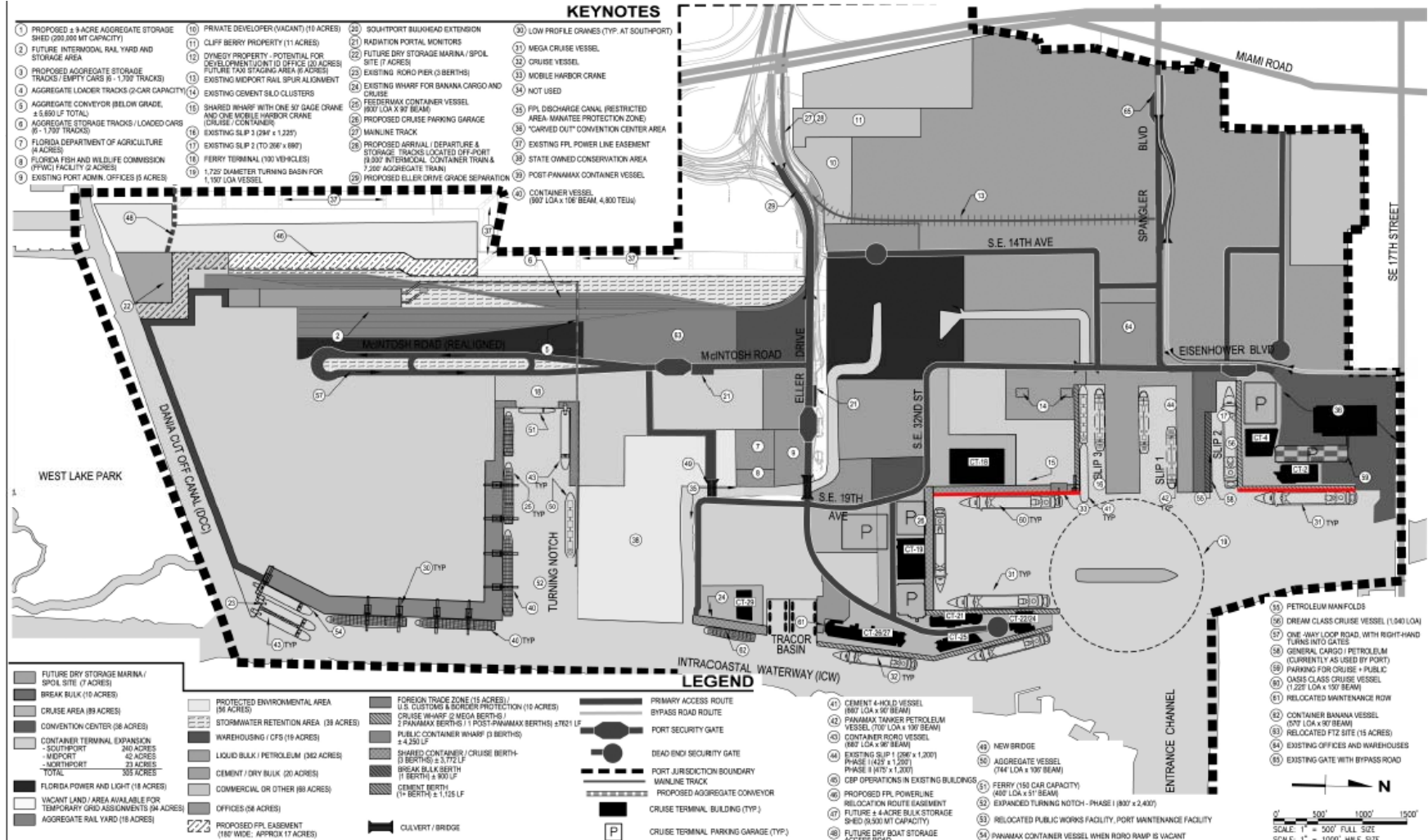


# 5-Year Master Plan Projects

Total estimated cost is \$464 Million

Northport	Replace Berth 9, 10 bulkheads
	By-Pass Road - Phase 1
	By-Pass Road - Phase 2
	Cruise Terminal #2 Improvements
	Cruise Terminal #4 Improvements
	Molasses Tanks Reuse
	Slip 2 Expansion
Midport	
	Cruise Terminal #19 Improvements
	Cruise Terminal #21 Improvements
	Cruise Terminal #26 Improvements
	CT #18 Parking Garage
	Tracor Basin Finger Pier Replace with Catwalk+Dolphin
Southport	
	McIntosh Road Improvements
	Upland Enhancement
	Westlake Mitigation
	Super Post Panamax Crane (1)
	Turning Notch Expansion - Contract 1
	ICTF- Rail & Yard
Port-wide	
	ACOE Deepening and Widening-Design

# 10-year Vision Plan

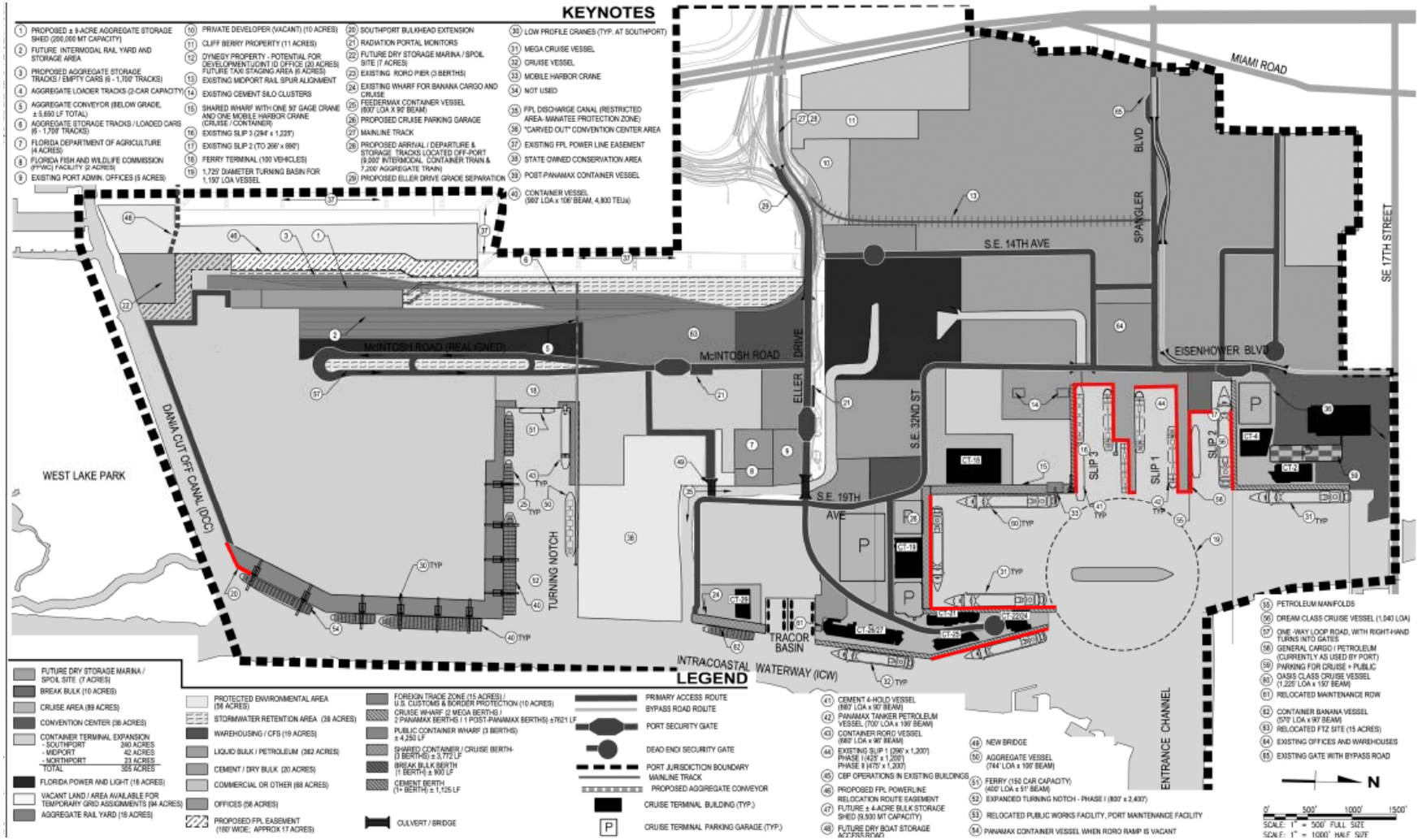


# 10-Year Projects and Costs

Total estimated cost is \$585 Million

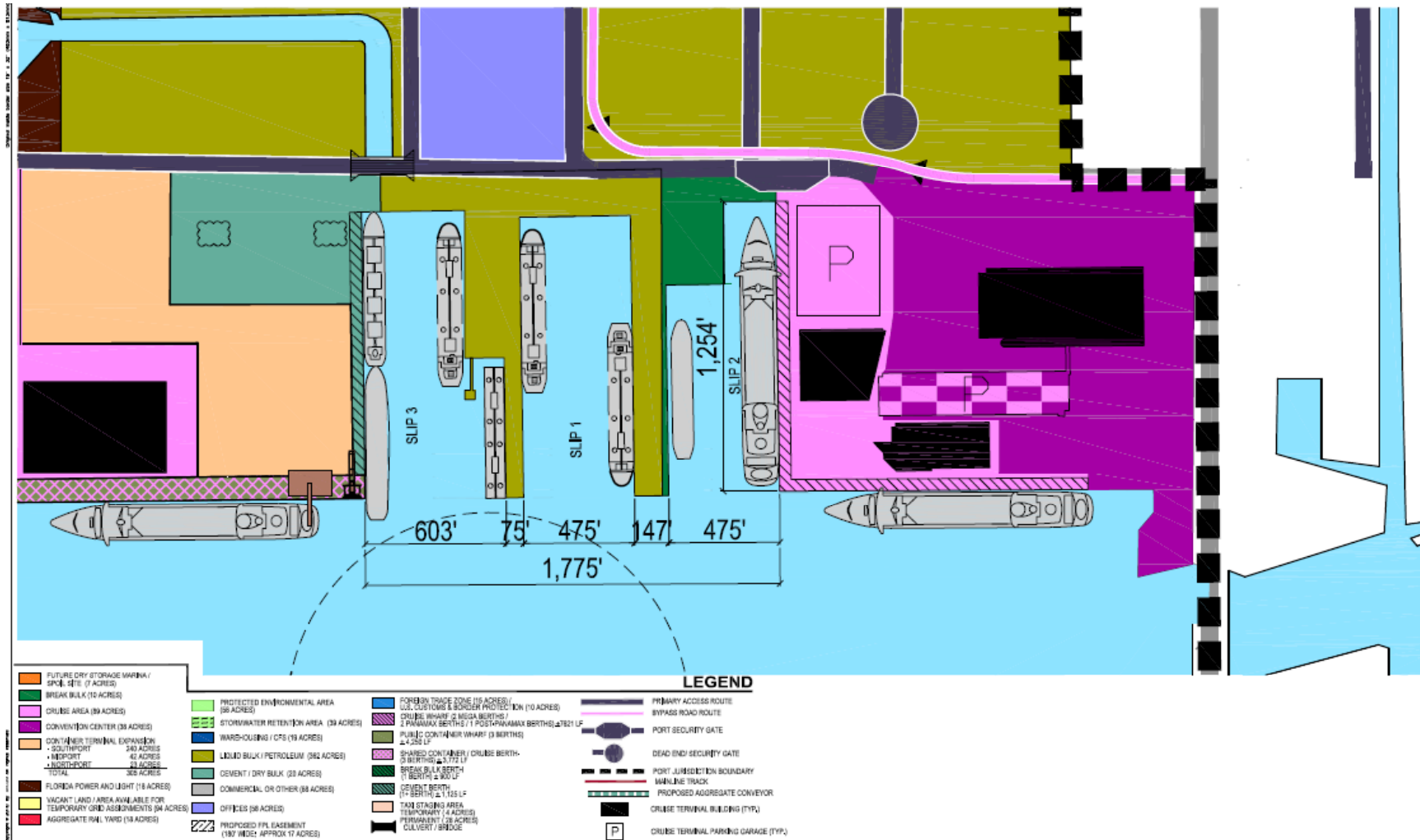
Northport	
	Replace Berth 1, 2, 3 bulkheads
	CT#4 Parking Garage
Midport	
	Replace Berth 16, 17, 18 bulkheads
	Multimodal Facility - Phase 1
Southport	
	Turning Notch Expansion - Contract 2
	Crushed Rock Facility
	FTZ Relocation
	Super Post Panamax Cranes (2)
	Container Yard Improvements
Port-wide	
	ACOE Dredging/Widening

# 20-year Vision Plan





# 20-year Vision Plan, Northport



# 20-Year Projects and Costs

Total estimated cost is \$552 Million

Northport	
	Replace Berth 4 bulkhead
	Replace Berth 5, 5A bulkheads
	Replace Berth 6 bulkhead
	Replace Berth 7, 8, 8A bulkheads
	Replace Berth 11, 12, 13, 13A bulkheads
	Replace Berth 14, 15 bulkheads
Midport	
	Replace Berth 19, 20 bulkheads
	Replace Berth 21, 22 bulkheads
	Replace Berth 23 bulkhead
	Replace Berth 24, 25 bulkheads
	Multimodal Facility - Phase 2
Southport	
	Super Post Panamax Cranes (2)
	Demolish RORO Berths and Lengthen Berth 33
Port-wide	

## Cost Comparison of 2009 vs. 2006 Master Plans

	2009 Cost (\$M)	2006 Cost (\$M)
5-Year Master Plan	\$ 464	\$ 395
10-Year Vision Plan	\$ 585	\$ 737
20-Year Vision Plan	\$ 552	\$ 810
Total	\$ 1,601	\$ 1,942

## Upcoming Master Plan Presentations

- Master Plan presentation to PEA on July 9
- Stakeholders Briefing at Port Everglades on July 29
- Public Meeting on August 31, 5:30 – 7:30 p.m., Public Library